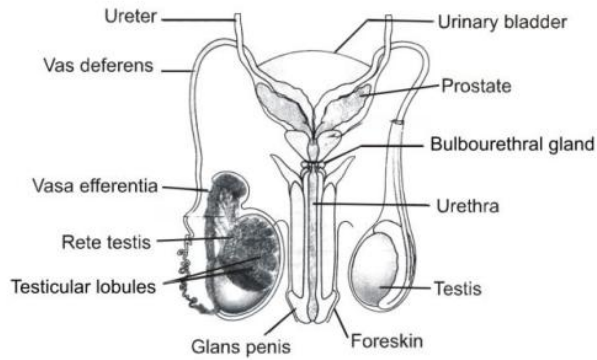


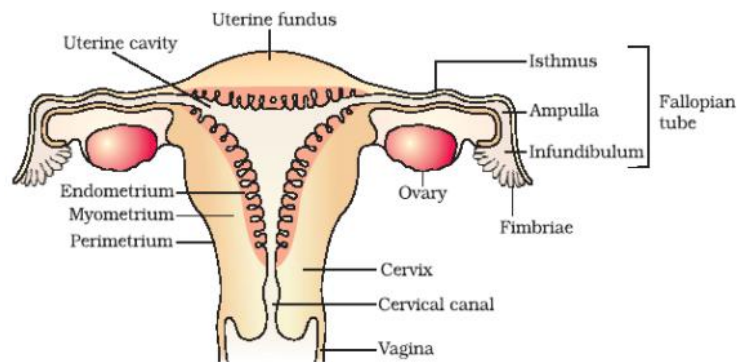
158. Inability to conceive or produce children even after 2 years of unprotected sexual cohabitation is called infertility. Which methods are now available to help such couples?  
 (1) In vitro fertilization (2) In-vivo fertilization  
 (3) Test tube baby programme (4) Assisted reproductive technologies (ART)
159. The method of directly injecting a sperm into ovum, assisted by reproductive technology is called  
 (1) GIFT (2) ZIFT (3) ICSI (4) ET
160. Below is given a diagram of male reproductive system. In this diagram two labellings are wrong. Column-I contains two wrongly labelled organs and column-II with their correct labellings. You have to select the right option



Diagrammatic view of male reproductive system

	Column - I	Column - II
(1)	Vasa efferentia and prostate gland	Epididymis and seminal vesicles
(2)	Retetestis and urinary bladder	Vasa efferentia and seminal vesicles
(3)	Bulbourethral gland prostate	Cowpers gland and seminal vesicles
(4)	Testicular lobule and glans penis	Seminiferous tubule and fore skin

161. Below is given a labelled sectional view of human female reproductive system. After the diagram, four options are given regarding the organ and its function.



**Options**

- i. **Fimbrae**- Collect ovum after ovulation.
- ii. **Ampulla**- Site of fertilisation.
- iii **Ovary**- Site of oogenesis and follicular development
- iv. **Endometrium**- Site of implanatation.

How many matchings are correct-

- (1) One (2) Two (3) Three (4) Four

- 162.** Who directs the path of pollen tube in style.  
 (1) Obturator (2) Synergid (3) Tube nucleus (4) None of the above
- 163.** Polysiphonous pollen tube is a feature of  
 (1) Cruciferae (2) Asteraceae (3) Cucurbitaceae (4) Liliaceae.
- 165.** In which type flowers are odourless, nectar secreting and yellow petals are found  
 (1) Hydrophilous flower (2) Anemophilous flower (3) Ornithophilous flower (4) Entomophilous

158.	159.	160.	161.	162.	163.	165.			
4	3	1	4	3	3	3			