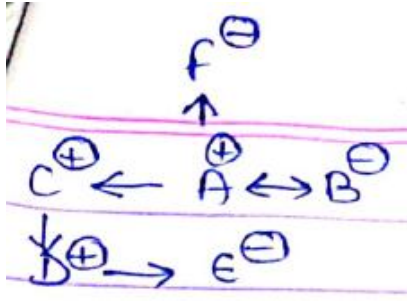


MENTAL ABILITY TEST (MAT) PAPER

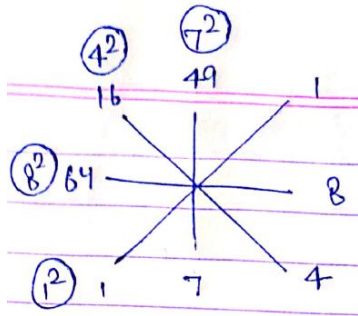


1. Ans: Daughter
2. Ans: Three
3. Ans: Brother in law
4. Ans: Mother
5. Ans: Mother
6. Ans: 2 (Mirror image)
7. Ans: 2 (Mirror image)
8. Ans: 1 (Mirror image)
9. Ans: 3 (Mirror image)
10. Ans: 1 (Mirror image)
11. Ans: 4 (Mirror image)
12. Ans: 1 (Mirror image)
13. Ans: 4 (Mirror image)
14. Ans: 4 (Mirror image)
15. Ans: 3 (Mirror image)



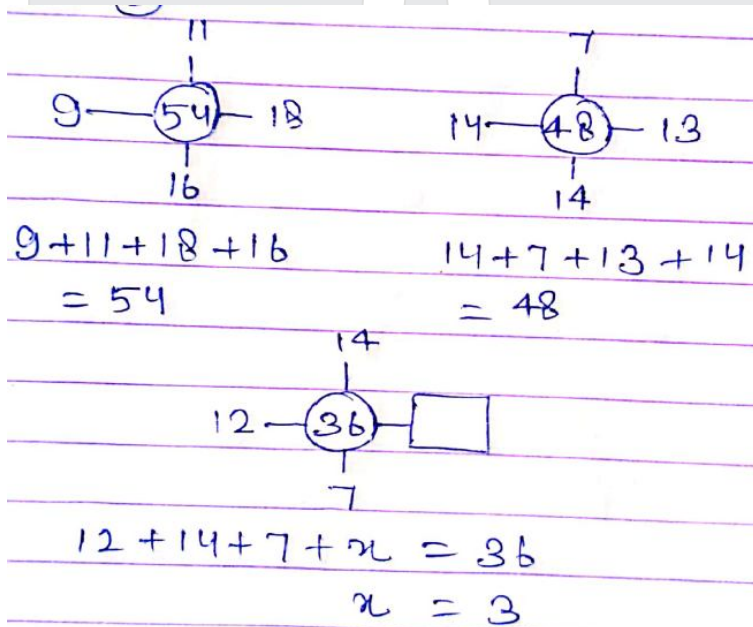
16. Ans: 2

Sol:



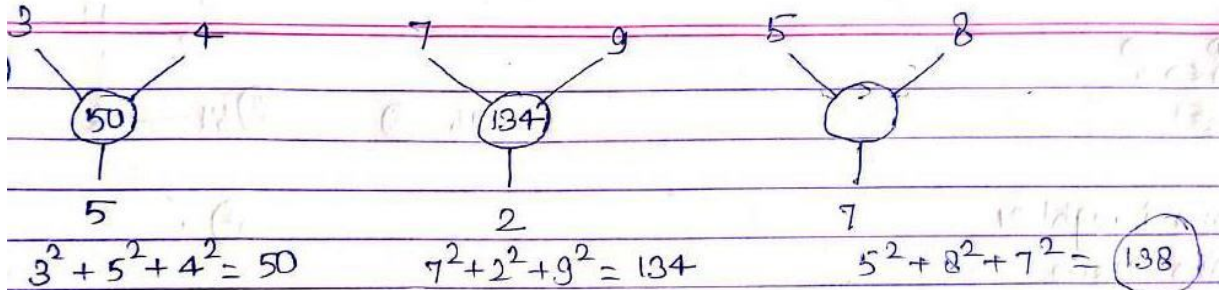
17. Ans: 3

Sol:



18. Ans: 4

Sol:



19. **Ans: 2**

Sol:

$$\begin{aligned}1 &= 2^3 - 7 \\ 20 &= 3^3 - 7 \\ 57 &= 4^3 - 7 \\ 118 &= 5^3 - 7\end{aligned}$$

20. **Ans: 3**

Sol:

$$\begin{aligned}7 \times (6 - 1) &= 35 \\ 5 \times (7 - 4) &= 15 \\ 8 \times (9 - 2) &= 56\end{aligned}$$

21. **Ans: 2**

Sol:

$$\begin{aligned}11^2 - 5^2 &= 96 \\ 9^2 - 6^2 &= 45 \\ 15^2 - 9^2 &= 144\end{aligned}$$

22. **Ans: 1**

Sol:

$$\begin{aligned}77 \div 11 &= 7, 7 \times 2 = 14 \\ 11 \div 88 &= 8, 8 \times 2 = 16 \\ 9 \div 81 &= 9, 9 \times 2 = 18\end{aligned}$$

23. **Ans: 2**

Sol:

$$\begin{aligned}7 \times 6 - 3 &= 39 \\ 8 \times 5 - 2 &= 38 \\ 9 \times 4 - 1 &= 35\end{aligned}$$

24. **Ans: 2**

Sol:

$$\begin{aligned}4 \times 3 + 6 &= 18 \\ 5 \times 7 + 9 &= 44 \\ 9 \times 8 + 2 &= 74\end{aligned}$$

25. **Ans: 4**

Sol:

$$\begin{aligned}5 \times 1 = 5; 4 \times 2 = 8; 2 \times 2 = 4 &= 584 \\ 6 \times 1 = 6; 7 \times 1 = 7; 4 \times 2 = 8 &= 678\end{aligned}$$

$$3 \times 2 = 6; 3 \times 3 = 9; 2 \times 2 = 4 = 694$$

26. Ans: 1

Sol:

$$\begin{aligned} 17 + 20 &= 37 \\ 37 + 40 &= 77 \\ 77 + 80 &= 157 \\ 157 + 160 &= 317 \end{aligned}$$

27. Ans: 4

Sol:

$$\begin{aligned} 12 + 15 &= 27 \\ 15 + 27 &= 42 \\ 27 + 42 &= 69 \\ 69 + 111 &= 180 \end{aligned}$$

28. Ans: 1

Sol:

$$\begin{aligned} 39 + 17 &= 56 \\ 56 + 17 &= 73 \\ 73 + 17 &= 90 \\ 90 + 17 &= 107 \\ 107 + 17 &= 124 \\ 124 + 17 &= 141 \end{aligned}$$

29. Ans: 3

Sol:

$$\begin{array}{r} 789 \\ 678 \\ 567 \\ 456 \\ 345 \\ 234 \end{array}$$

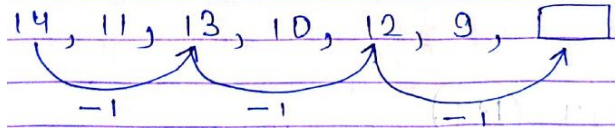
30. Ans: 4

Sol:

$$\begin{array}{ccccc} 0 & 6 & 24 & 60 & 120 \\ 1^3 - 1 & 2^3 - 2 & 3^3 - 3 & 4^3 - 4 & 5^3 - 5 \\ \\ 6^3 - 6 & = & 210 & & \end{array}$$

31. Ans: 3

Sol: Alternating Decreases by:



32. Ans: 2

Sol:

$$2^3 - 2 \quad 3^3 - 3 \quad 4^3 - 4 \quad 5^3 - 5$$

$$6^3 - 6 = 210$$

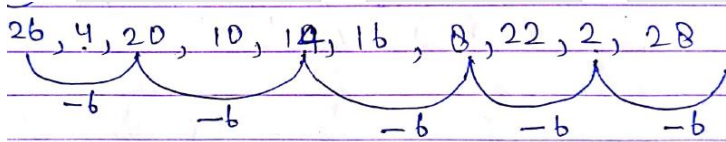
33. Ans: 2

Sol:

$$\begin{aligned} 0 + 9 &= 9 \\ 9 + 12 &= 21 \\ 21 + 15 &= 36 \\ 36 + 18 &= 54 \\ 54 + 21 &= 75 \end{aligned}$$

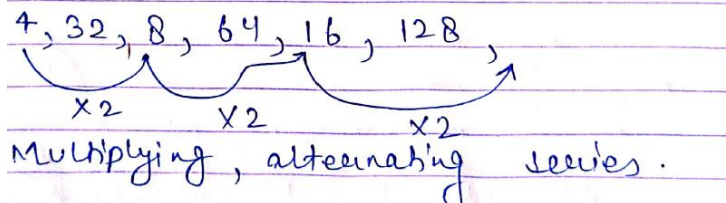
34. Ans: 4

Sol:



35. Ans: 4

Sol:



36. Ans: 1

Sol:

3 open or 2 closed semi circle.

37. Ans: 1

Sol:

Vertical content are in same direction.

38. Ans: 4

Sol:

Maximum open side in other direction.

39. Ans: 2

Sol:

Dot is in front of straight line.

40. Ans: 3

Sol:

No mirror / water image

41. Ans: 3

Sol:

Arrow head opposite direction

42. Ans: 2

Sol:

Both circle are not in 90° or 18°

43. Ans: 2

Sol:

Black head same direction

44. Ans: 1

Sol:

Neither increasing / decreasing sides

45. Ans: 4

Sol:

No same ear / eyes

46. Ans: 2

Sol:

Gir : Gujarat :: Kaziranga : Assam

47. Ans: 4

Sol:

Durand Cup : Football :: Uber Cup : Badminton

48. Ans: 2

Sol:

Factory : Production :: School : Education

49. Ans: 1

Sol:

Chandrayan : 2019 :: Mangalyan : 2014

50. Ans: 1

Sol:

PMG : SIX :: TIN : WEE

P M G — S I X

+3 -4 +17

51. Ans: 2

Sol:

PV Sindhu : Badminton :: Deepan Punia : Wrestling

52. Ans: 3

Sol:

AFC : DIF :: BED :
Position value + 3

53. Ans: 2

Sol:

Relation

54. Ans: 4

Sol:

EART : CCPV :: BATH
-2 +2 -2 +2
Position Value

55. Ans: 3

Sol:
Natural Satellites

56. Ans: 4

Sol:
D is 7 and N is 1

57. Ans: 3

Sol:
A is 9

58. Ans: 1

Sol:
T is 5

59. Ans: 4

Sol:
M is 6

60. Ans: 3

Sol:
T is 5, Q is 4

61. Ans: 3

Sol:

	tea	coffee		teacher	Doc	Tour	Endus	Adv
A	✓	X	A.	✓	X	X	X	X
B	X	✓	B	X	X	X	✓	X
C	✓	X	C	X	✓	X	X	X
D	X	✓	D	X	X	✓	X	X
E	✓	X	E	X	X	X	X	✓

62. Ans: 3

63. Ans: 4

64. Ans: 4

65. Ans: 2

66. Ans: 2

Sol: square changes 1 alternate in clock wise direction.

67. Ans: 3

Sol: ≠ one drop clock wise

C " " "

X left corner (up) – centre – left corner (down)

Right corner (up) – centre – Right corner (down)

68. Ans: 3

69. Ans: 2

Sol:

diagonal 1, 3, 1, 4, 1, 5
2, 4, 2, 5, 2, 6

70. Ans: 2

Sol:

Change comes accordingly, 1, 2, 3, 4, 5

71. Ans: 1

Sol:

At first top – right corner slope is removed, then flipped

72. Ans: 2

73. Ans: 4

Sol:

A and E are same ∴ F will be same as B

74. Ans: 4

Sol:

observe diagonal and fix symbol.

75. **Ans: 2**

Sol:
Arrow moves 2 steps
Circle moves 1 step

76. **Ans: 1**

Sol: $17 \times 3 = 43 + 8$

77. **Ans: 3**

Sol: $6 \times 12 - 48 = 24$

78. **Ans: 1**

Sol: $48 \div 8 = 8 - 2$

79. **Ans: 3**

Sol: $30 + 26 = 8 \times 7$

80. **Ans: 2**

Sol: $3 \times 8 = 19 + 5$

81. **Ans: 2**

Sol: $6 \times 3 = 12 + 6$

82. **Ans: 3**

Sol: $5 \times 4 = 11 + 9$

83. **Ans: 1**

Sol: $22 + 14 = 48 - 12$

84. **Ans: 3**

Sol: $4 = 9 - 6 + 1$

85. **Ans: 4**

Sol: $59 + 21 = 8 \times 10$

86. Ans: 1

Sol: AB AB AB AB AB AB

87. Ans: 2

Sol: mopn mopn mopn mopn

88. Ans: 3

Sol: BBAABBBBAABB

89. Ans: 4

Sol: ABB ABB ABB ABB
1 2 1 2 1 2

90. Ans: 2

Sol: AC AC AB AB AC AC AB AB AC AC
ACAC, ABAB, ACAC, ABAB, ACAC

91. Ans: 4

Sol: CABBACCABBACCABBAC
CABBAC, CABBAC, CABBAC

92. Ans: 4

Sol: WXV W W X V W W X V W X V
WXVW, WXVW, WXVW, WXVW

93. Ans: 3

94. Ans: 3

Sol: A B B B A A B B B B B A A A
A, BBB, AA, BBBB, AAA,

95. Ans: 4

96. Ans: 4

Sol: code for H is 2

97. **Ans: 1**

Sol: code for A is a

98. **Ans: 1**

Sol: code for l is 8

99. **Ans: 3**

Sol: code for Z is 3

100. **Ans: 2**

Sol: code for H is 2 and that of z is 3.

