

Madhya Pradesh NTSE - 2019

A Detailed Analysis by Resonance

NTSE 2019: The National Talent Search Examination (NTSE) is a national level examination cum scholarship program. The scholarship program is conducted by NCERT and the students who are studying in class X are eligible for **NTSE 2019** examination and selection procedure.

Eligibility: As per the eligibility criteria of NTSE 2018, all the students who are studying in X standard are eligible to apply for this scholarship program. A student from any state of the country can register for this examination and scholarship scheme. Whether a student is from a government or a private school, he/she is eligible.

Pattern/ Syllabus: The National Talent Search Examination is conducted for the students studying in the Class X. The examination consists of two tests:

1. Mental Ability Test (MAT)
2. Scholastic Aptitude Test (SAT)

NTSE Mental Ability Test (MAT) Syllabus

This test is given to judge the power of reasoning, to evaluate and discriminate the ability of thinking, judging and visualizing etc. A variety of questions, for example - analogies, classification, series, pattern perception, hidden figures, coding decoding, block assembly, problem solving, etc. are used for this purpose.

NTSE Language Test (LCT) Syllabus

Language Test is designed to judge the power of reading comprehension, logical sequencing, and interpretative, evaluative, predictive and creative components of language. The test is conducted in English and Regional languages.

NTSE Scholastic Aptitude Test (SAT) Syllabus (Maths, Science & Social Science)

This section is conducted to judge that how much of text-book knowledge you have gained. As India doesn't has any single unified board system, NCERT has not prescribed any particular syllabus for the State Level Examination or for National Level Examination.

You can expect questions that are asked at the National Level (Stage-I) according to the standard of Classes IX and X level.

Question Paper: The medium of test is English and regional languages and it comprised of 200 question. The students have to select and mark one right answer from the given options. Each right answer carries one point each, thus making the total score of the candidate in a test is equal to the number of questions answered correctly.

Merit Clause: All the students who achieve requisite scores at this level automatically qualify for scholarships that are handed over by NCERT.

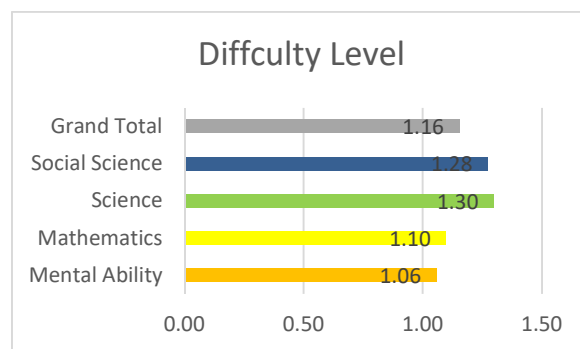
OVERALL MARKS DISTRIBUTION

The **NTSE 2019 Exam Pattern** was an objective type test based on paper-pen format.

Test	No. Of Questions	Maximum Marks	Time Allotted
MAT	100 Questions	100 Marks	120 minutes
SAT - Maths, Science, Social Sciences	100 Questions	100 Marks	120 minutes

Subject	Class VIII No of Questions	Class IX No of Questions	Class X No of Questions	Total No of Questions
Mental Ability			100	100
Mathematics		3	17	20
Science	1	22	17	40
Social Science		11	29	40
Grand Total	1	36	163	200

Subject	Difficulty Level
Mental Ability	1.06
Mathematics	1.10
Science	1.30
Social Science	1.28
Grand Total	1.16



OVERALL DIFFICULTY LEVEL ANALYSIS

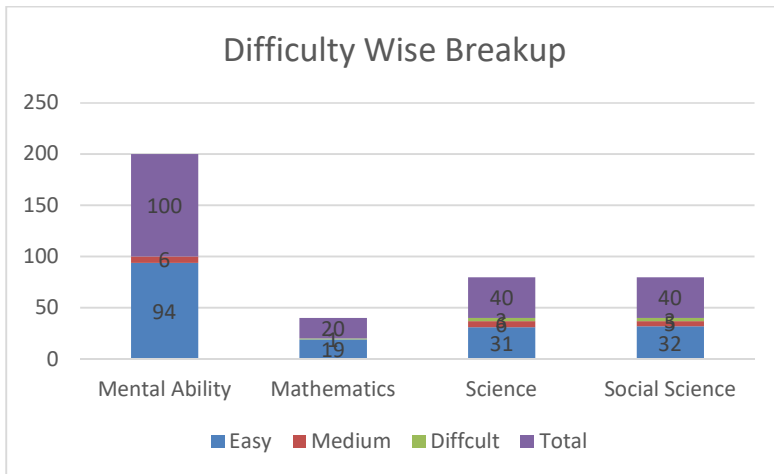
In this analysis, we have rated every question on a scale of 1 to 3. The ratings are done by expert faculty of Resonance. The individual ratings are averaged to calculate overall difficulty level.

- 1: Easy
- 2: Moderate
- 3: Difficult

Difficulty Level Analysis: No of Questions

Subject	Easy		Medium		Difficult		Total	
	No of Questions	Total Marks	No of Questions	Total Marks	No of Questions	Total Marks	No of Questions	Total Marks
Mental Ability	94	94	6	6			100	100
Mathematics	19	19			1	1	20	20
Science	31	31	6	6	3	3	40	40
Social Science	32	32	5	5	3	3	40	40
Grand Total	176	176	17	17	7	7	200	200

Question Wise Difficulty Breakup



SUBJECT WISE ANALYSIS

SCIENCE ANALYSIS

Science			
UNIT & TOPIC NAME	NO OF QUESTIONS	TOTAL MARKS	(%) WEIGHTAGE
Science	40	40	100.00%
ATOM AND MOLECULE	3	3	7.50%
FORMULA	1	1	2.50%
FUNDAMENTAL PARTICLES	1	1	2.50%
ISOTOPEs	1	1	2.50%
CARBON	1	1	2.50%
CONFIGURATION	1	1	2.50%
CELL	6	6	15.00%
BACTERIOPHAGE	1	1	2.50%
CELL DIVISION	1	1	2.50%
CELL MEMBRANE	1	1	2.50%
CELL ORGANELLE	1	1	2.50%
CELL THEOREY	1	1	2.50%
CHROMOSOME	1	1	2.50%
DIVERSITY	2	2	5.00%
PLANT	2	2	5.00%
ECOSYSTEM	1	1	2.50%
PYRAMID	1	1	2.50%
ELECTRICITY	2	2	5.00%
CONDUCTIVITY	1	1	2.50%
ENERGY	1	1	2.50%
GRAVITATION	3	3	7.50%
ESCAPE VELOCITY	1	1	2.50%
ORBITAL SATELLITE	1	1	2.50%
SATELLITE	1	1	2.50%
KINETICS	1	1	2.50%
DISTANCE AND DISPLACEMENT	1	1	2.50%
LIGHT	2	2	5.00%
PRISM	1	1	2.50%
SPECTRUM	1	1	2.50%
MAGNETIC EFFECT OF CURRENT	1	1	2.50%
MAGNETIC FIELD INTENCITY	1	1	2.50%
MATTER	5	5	12.50%
PURIFICATION OF AIR	1	1	2.50%
SOL	1	1	2.50%
SOLUTION	1	1	2.50%
STATES	1	1	2.50%
TYNDALL EFFECT	1	1	2.50%
NIGHT SKY	1	1	2.50%
PLANETS	1	1	2.50%

NUTRITION	1	1	2.50%
MODE OF NUTRITION	1	1	2.50%
OUR ENVIRONMENT	1	1	2.50%
GLOBAL WARMING	1	1	2.50%
PERIODIC TABLE	4	4	10.00%
ANIONS	1	1	2.50%
CONFIGURATION	1	1	2.50%
IONS	1	1	2.50%
QUANTUM NUMBER	1	1	2.50%
RESPIRATION	2	2	5.00%
CELLULAR RESPIRATION	2	2	5.00%
SOURCES OF ENERGY	1	1	2.50%
NATURE OF SOURCE	1	1	2.50%
TRANSPORTATION	1	1	2.50%
PLANT	1	1	2.50%
WAVE MOTION	1	1	2.50%
NATURE OF WAVES	1	1	2.50%
WORK, ENERGY AND POWER	1	1	2.50%
CONSERVATIVE AND NON-CONSERVATIVE FORCE	1	1	2.50%
Grand Total	40	40	100.00%

MATHEMATICS ANALYSIS

Mathematics			
UNIT & TOPIC NAME	NO OF QUESTIONS	TOTAL MARKS	(%) WEIGHTAGE
MATHEMATICS	20	20	100.00%
AREA OF PARALLELOGRAM	1	1	5.00%
AREA OF PARALLELOGRAM	1	1	5.00%
AREA RELATED TO CIRCLE	1	1	5.00%
AREA RELATED TO CIRCLE	1	1	5.00%
CO-ORDINATE GEOMETRY	2	2	10.00%
CO-ORDINATE GEOMETRY	2	2	10.00%
GENERAL KNOWLEDGE	1	1	5.00%
GENERAL KNOWLEDGE	1	1	5.00%
HEIGHT AND DISTANCE	1	1	5.00%
HEIGHT AND DISTANCE	1	1	5.00%
HERONS FORMULA	1	1	5.00%
HERONS FORMULA	1	1	5.00%
POLYNOMIAL	2	2	10.00%
POLYNOMIAL	1	1	5.00%
REMAINDER THEOREM	1	1	5.00%
PROBABILITY	1	1	5.00%

PROBABILITY	1	1	5.00%
PROGRESSION	2	2	10.00%
PROGRESSION	1	1	5.00%
SUM OF SERIES	1	1	5.00%
REAL NUMBER	3	3	15.00%
RATIONAL NUMBER	2	2	10.00%
REAL NUMBER	1	1	5.00%
STATISTICS	2	2	10.00%
MEAN	1	1	5.00%
MEDIAN	1	1	5.00%
SURFACE AREA AND VOLUME	1	1	5.00%
CUBE	1	1	5.00%
TRIANGLE	1	1	5.00%
TRIANGLE	1	1	5.00%
TRIGONOMETRY	1	1	5.00%
TRIGONOMETRY	1	1	5.00%
Grand Total	20	20	100.00%

MENTAL ABILITY ANALYSIS

Mental Ability			
UNIT & TOPIC NAME	NO OF QUESTIONS	TOTAL MARKS	(%) WEIGHTAGE
Mental Ability	100	100	100.00%
ALPHABET TEST	2	2	2.00%
ALPHABET TEST	2	2	2.00%
ANALOGY	13	13	13.00%
LETTER ANALOGY	1	1	1.00%
NUMBER ANALOGY	2	2	2.00%
WORD ANALOGY	10	10	10.00%
ARITHMETICAL REASONING	6	6	6.00%
ARITHMETICAL REASONING	6	6	6.00%
BLOOD RELATION TEST	2	2	2.00%
BLOOD RELATION TEST	2	2	2.00%
CALENDAR TEST	1	1	1.00%
CALENDAR TEST	1	1	1.00%
CLASSIFICATION	5	5	5.00%
CLASSIFICATION	5	5	5.00%
CLOCK TEST	3	3	3.00%
CLOCK TEST	3	3	3.00%
CODING-DECODING	16	16	16.00%
CODING- DECODING	1	1	1.00%

LETTER-LETTER CODING	4	4	4.00%
LETTER-NUMBER CODING	3	3	3.00%
PUZZLE BASE CODING	5	5	5.00%
SUBSTITUTION CODING	3	3	3.00%
MATHEMATICAL OPERATION	7	7	7.00%
APPLICATION OF BODMAS	1	1	1.00%
MATHEMATICAL OPERATION	2	2	2.00%
PROBLEM SOLVING BY SUBSTITUTION	4	4	4.00%
MIRROR IMAGE	1	1	1.00%
MIRROR IMAGE	1	1	1.00%
NON- VERBAL ANALOGY	1	1	1.00%
NON-VERBAL ANALOGY	1	1	1.00%
NONO-VERBAL ANALOGY	1	1	1.00%
NON-VERBAL ANALOGY	1	1	1.00%
NON-VERBAL ANALOGY	4	4	4.00%
NON-VERBAL ANALOGY	4	4	4.00%
NON-VERBAL CLASSIFICATION	8	8	8.00%
NON-VERBAL CLASSIFICATION	8	8	8.00%
NON-VERBAL SERIES	9	9	9.00%
NON-VERBAL SERIES	9	9	9.00%
NUMBER SERIES	10	10	10.00%
NUMBER SERIES	10	10	10.00%
RANKING AND ORDERING TEST	5	5	5.00%
ORDERING TEST	1	1	1.00%
RANKING AND ORDERING TEST	4	4	4.00%
VENN DIAGRAM	5	5	5.00%
LOGICAL VENN DIAGRAM	4	4	4.00%
SIMPLE VENN DIAGRAM	1	1	1.00%
WATER IMAGE	1	1	1.00%
WATER IMAGE	1	1	1.00%
Grand Total	100	100	100.00%

SOCIAL SCIENCE ANALYSIS

Social Science			
UNIT & TOPIC NAME	NO OF QUESTIONS	TOTAL MARKS	(%) WEIGHTAGE
Social Science	40	40	100.00%
AGRICULTURE	2	2	5.00%
AGRICULTURE	2	2	5.00%
ANCIENT INDIA	5	5	12.50%
ANCIENT INDIA	5	5	12.50%

CONSTITUTIONAL RIGHT AND DUTIES	2	2	5.00%
CONSTITUTIONAL RIGHT AND DUTIES	2	2	5.00%
DEMOCRACY	1	1	2.50%
DEMOCRACY	1	1	2.50%
DISASTER MANAGEMENT	1	1	2.50%
DISASTER MANAGEMENT	1	1	2.50%
ECONOMIC DEVELOPMENT AND PLANNING	1	1	2.50%
ECONOMIC DEVELOPMENT AND PLANNING	1	1	2.50%
ECONOMY SERVICE SECTOR AND INFRASTRUCTURE	2	2	5.00%
ECONOMY SERVICE SECTOR AND INFRASTRUCTURE	2	2	5.00%
GLOBALISATION	1	1	2.50%
GLOBALISATION	1	1	2.50%
INDIAN CONSTITUTION	2	2	5.00%
INDIAN CONSTITUTION	2	2	5.00%
INDUSTRIES IN INDIA	3	3	7.50%
INDUSTRIES IN INDIA	3	3	7.50%
MEDIEVAL HISTORY	1	1	2.50%
CULTURAL TRENDS	1	1	2.50%
MODERN HISTORY	9	9	22.50%
CONTRIBUTION OF MP IN FREEDOM STRUGGLE	1	1	2.50%
FIRST FREEDOM STRUGGLE	3	3	7.50%
FREEDOM MOVEMENT	2	2	5.00%
NATIONAL AWAKENING	2	2	5.00%
POST- INDEPENDENCE EVENT	1	1	2.50%
MONEY AND CREDIT	1	1	2.50%
MONEY AND CREDIT	1	1	2.50%
RESOURCES IN INDIA II	2	2	5.00%
RESOURCES IN INDIA II	2	2	5.00%
RESOURCES IN INDIA I	2	2	5.00%
RESOURCES IN INDIA I	2	2	5.00%
RESOURCES IN INDIA II	3	3	7.50%
RESOURCES IN INDIA II	3	3	7.50%
TRANSPORT COMMUNICATION AND FOREIGN TRADE	2	2	5.00%
TRANSPORT COMMUNICATION AND FOREIGN TRADE	2	2	5.00%
Grand Total	40	40	100.00%

EXPECTED CUTOFF

Resonance Experts feel that as the Pattern Has Been Changed From previous year, the cutoff is expected Between 180 to 185