

Chhattisgarh NTSE - 2019

A Detailed Analysis by Resonance

NTSE 2019: The National Talent Search Examination (NTSE) is a national level examination cum scholarship program. The scholarship program is conducted by NCERT and the students who are studying in class X are eligible for **NTSE 2019** examination and selection procedure.

Eligibility: As per the eligibility criteria of NTSE 2018, all the students who are studying in X standard are eligible to apply for this scholarship program. A student from any state of the country can register for this examination and scholarship scheme. Whether a student is from a government or a private school, he/she is eligible.

Pattern/ Syllabus: The National Talent Search Examination is conducted for the students studying in the Class X. The examination consists of two tests:

1. Mental Ability Test (MAT)
2. Scholastic Aptitude Test (SAT)

NTSE Mental Ability Test (MAT) Syllabus

This test is given to judge the power of reasoning, to evaluate and discriminate the ability of thinking, judging and visualizing etc. A variety of questions, for example - analogies, classification, series, pattern perception, hidden figures, coding decoding, block assembly, problem solving, etc. are used for this purpose.

NTSE Language Test (LCT) Syllabus

Language Test is designed to judge the power of reading comprehension, logical sequencing, and interpretative, evaluative, predictive and creative components of language. The test is conducted in English and Regional languages.

NTSE Scholastic Aptitude Test (SAT) Syllabus (Maths, Science & Social Science)

This section is conducted to judge that how much of text-book knowledge you have gained. As India doesn't has any single unified board system, NCERT has not prescribed any particular syllabus for the State Level Examination or for National Level Examination.

You can expect questions that are asked at the National Level (Stage-I) according to the standard of Classes IX and X level.

Question Paper: The medium of test is English and regional languages and it comprised of 200 question. The students have to select and mark one right answer from the given options. Each right answer carries one point each, thus making the total score of the candidate in a test is equal to the number of questions answered correctly.

Merit Clause: All the students who achieve requisite scores at this level automatically qualify for scholarships that are handed over by NCERT.

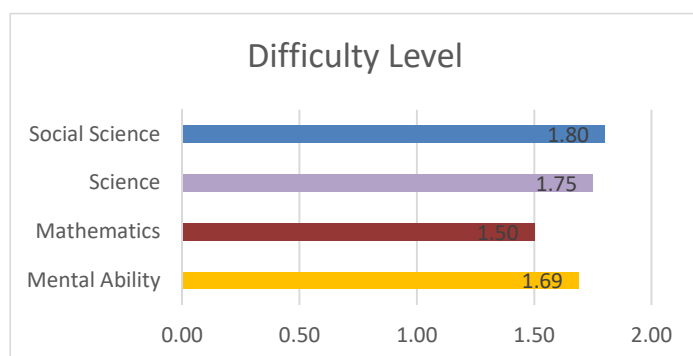
OVERALL MARKS DISTRIBUTION

The **NTSE 2019 Exam Pattern** was an objective type test based on paper-pen format.

Test	No. Of Questions	Maximum Marks	Time Allotted
MAT	100 Questions	100 Marks	120 minutes
SAT - Maths, Science, Social Sciences	100 Questions	100 Marks	120 minutes

Subject	Class VII No of Questions	Class VIII No of Questions	Class IX No of Questions	Class X No of Questions	Class XI No of Questions	Total No of Questions
Mental Ability				100		100
Mathematics		1	9	9	1	20
Science		2	17	20	1	40
Social Science	2	6	11	21		40
Grand Total	2	9	37	150	2	200

Subject	Difficulty Level
Mental Ability	1.69
Mathematics	1.50
Science	1.75
Social Science	1.80
Grand Total	1.71



OVERALL DIFFICULTY LEVEL ANALYSIS

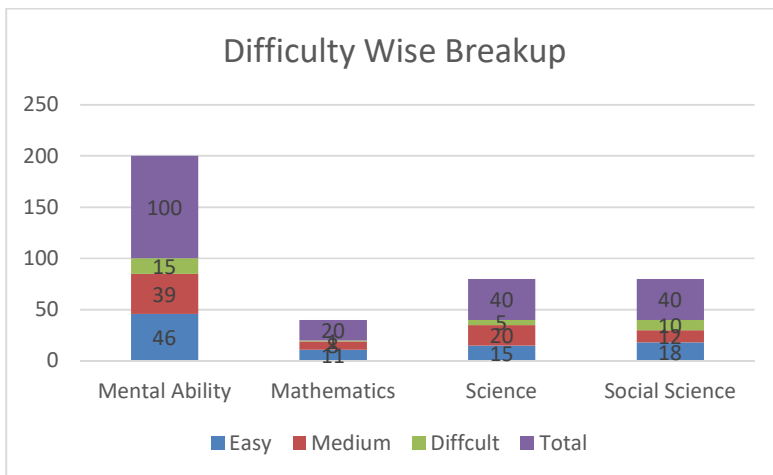
In this analysis, we have rated every question on a scale of 1 to 3. The ratings are done by expert faculty of Resonance. The individual ratings are averaged to calculate overall difficulty level.

- 1: Easy
- 2: Moderate
- 3: Difficult

Difficulty Level Analysis: No of Questions

Subject	Easy		Medium		Difficult		Total	
	No of Questions	Total Marks	No of Questions	Total Marks	No of Questions	Total Marks	No of Questions	Total Marks
Mental Ability	46	46	39	39	15	15	100	100
Mathematics	11	11	8	8	1	1	20	20
Science	15	15	20	20	5	5	40	40
Social Science	18	18	12	12	10	10	40	40
Grand Total	90	90	79	79	31	31	200	200

Question Wise Difficulty Breakup



SUBJECT WISE ANALYSIS

SCIENCE ANALYSIS

Science			
UNIT & TOPIC NAME	NO OF QUESTIONS	TOTAL MARKS	(%) WEIGHTAGE
Science	40	40	100.00%
Biology	14	14	35.00%
Contra and Coordination	1	1	2.50%
Control and Co-ordination	1	1	2.50%
Diversity of Living Organism	2	2	5.00%
Excretion	1	1	2.50%
Fundamental Unit of Life	1	1	2.50%
Improvement in food resources	4	4	10.00%
Natural Resources	1	1	2.50%
Nutrition	2	2	5.00%
Why do we fall ill	1	1	2.50%
Chemistry	13	13	32.50%
Acid base and salt	2	2	5.00%
Atom, Molecules	1	1	2.50%
Carbon and its compound	2	2	5.00%
Chemical Reaction and Equation	2	2	5.00%
coal and petroleum	1	1	2.50%
Matter	1	1	2.50%
Metals and Non-metals	2	2	5.00%
Periodic Table	1	1	2.50%
Structure of atoms	1	1	2.50%
Physics	13	13	32.50%
Circular motion	1	1	2.50%
Electricity	2	2	5.00%
Fluid	1	1	2.50%
Gravitation	1	1	2.50%
Heat	1	1	2.50%
Light	3	3	7.50%
Magnetic effect of current and EMI	1	1	2.50%
Rain, Thunder and lightning	1	1	2.50%
Wave, Motion and Sound	1	1	2.50%
Work, Energy and Power	1	1	2.50%
Grand Total	40	40	100.00%

MATHEMATICS ANALYSIS

Mathematics			
UNIT & TOPIC NAME	NO OF QUESTIONS	TOTAL MARKS	(%) WEIGHTAGE
Mathematics	20	20	100.00%
Airthmetic Progression	1	1	5.00%
General term	1	1	5.00%
Area of plane figures	1	1	5.00%
Area related to Circles	1	1	5.00%
Circles	2	2	10.00%
Chords	1	1	5.00%
Tangents	1	1	5.00%
Commercial Mathametic	2	2	10.00%
Income Tax	1	1	5.00%
Simple Interest	1	1	5.00%
Computer	1	1	5.00%
Logical Statements	1	1	5.00%
Coordinate Geometry	1	1	5.00%
Distance formula	1	1	5.00%
Direct and Inverse Variation	1	1	5.00%
Work	1	1	5.00%
Equations of Lines	1	1	5.00%
Slope	1	1	5.00%
Liner equations in two Variables	1	1	5.00%
Solvability	1	1	5.00%
Mensuration	2	2	10.00%
Cone	1	1	5.00%
Cuboid	1	1	5.00%
Polynomials	1	1	5.00%
Division	1	1	5.00%
Quadritic Equations	1	1	5.00%
Nature of roots	1	1	5.00%
Statistics	1	1	5.00%
Mode	1	1	5.00%
Triangles	2	2	10.00%
Circumcircle	1	1	5.00%
Similar Triangles	1	1	5.00%
Trigonometry	2	2	10.00%
Heights And Distances	1	1	5.00%
Trigonometric ratios	1	1	5.00%
Grand Total	20	20	100.00%

MENTAL ABILITY ANALYSIS

Mental Ability			
UNIT & TOPIC NAME	NO OF QUESTIONS	TOTAL MARKS	(%) WEIGHTAGE
Mental Ability	100	100	100.00%
Non Verbal	24	24	24.00%
Classification	2	2	2.00%
Clock Test	1	1	1.00%
Dice Test	5	5	5.00%
Figure Embedded	1	1	1.00%
Figure Partition and Counting	5	5	5.00%
Series	8	8	8.00%
Water Image	2	2	2.00%
Verbal	76	76	76.00%
Airthmetical Reasoning	3	3	3.00%
Alphabet Series	6	6	6.00%
Alphabet Test	5	5	5.00%
Analogy	3	3	3.00%
Blood Relations	4	4	4.00%
Calender Test	1	1	1.00%
Classification	2	2	2.00%
Coding-Decoding	5	5	5.00%
Data Sufficiency	7	7	7.00%
Direction Sense	3	3	3.00%
Logical sequence of words	2	2	2.00%
Mathematical Operations	4	4	4.00%
Missing Term in figure	5	5	5.00%
Number Series	4	4	4.00%
Puzzle Test	10	10	10.00%
Rank and Order Test	3	3	3.00%
Syllogism	2	2	2.00%
Venn Diagram	7	7	7.00%
Grand Total	100	100	100.00%

SOCIAL SCIENCE ANALYSIS

Social Science			
UNIT & TOPIC NAME	NO OF QUESTIONS	TOTAL MARKS	(%) WEIGHTAGE
Social Science	40	40	100.00%
Economics	7	7	17.50%
Food Security	1	1	2.50%

Globalisation and the Indian Economy	2	2	5.00%
Money and Credit	1	1	2.50%
Sectors of Indian Economy	1	1	2.50%
Taxation	1	1	2.50%
(blank)	1	1	2.50%
G.K.	1	1	2.50%
(blank)	1	1	2.50%
Geography	10	10	25.00%
Agriculture	1	1	2.50%
Earth	1	1	2.50%
General Knowledge	3	3	7.50%
Human Settlement	1	1	2.50%
India: Size and Location	1	1	2.50%
Manufacturing Industries	2	2	5.00%
Population	1	1	2.50%
History	15	15	37.50%
Between the two wars-Nasism in Germany and world war-II	1	1	2.50%
Civilizing the native, Educatindg the Nation	1	1	2.50%
Colonisation and the City	1	1	2.50%
First World war	1	1	2.50%
From Trade to Territory	1	1	2.50%
Indian National Movement	2	2	5.00%
Making of the Global World	1	1	2.50%
Manufacturing Industries	1	1	2.50%
New Kingdoms	1	1	2.50%
Pastoralists in the Modern World	1	1	2.50%
Roman Empire	1	1	2.50%
Russian Revolution	1	1	2.50%
The Industrial Revolution and Social Change	1	1	2.50%
(blank)	1	1	2.50%
Political Science	7	7	17.50%
Constitutional design	1	1	2.50%
Democracy in Independent India and the working of Political Institutions	1	1	2.50%
Democracy in the contemporary world	1	1	2.50%
Judiciary	1	1	2.50%
Rights	1	1	2.50%
Understanding laws	1	1	2.50%
Working of Institutions	1	1	2.50%
Grand Total	40	40	100.00%

EXPECTED CUTOFF

Resonance Experts feel that as the Pattern Has Been Changed From previous year, the cutoff is expected Between 157 to 162