



Resonance[®]
Educating for better tomorrow

JEE (MAIN) 2026

MEMORY BASED QUESTIONS & TEXT SOLUTION

SHIFT-1

DATE & DAY: 06th April 2026 & Monday

PAPER-1

Duration: 3 Hrs.

Time: 09:00 – 12:00 IST

SUBJECT: MATHEMATICS

Selections in JEE (Advanced)/
IIT-JEE Since 2002

52979

Classroom: 35901 | Distance: 17078

Selections in JEE (Main)/
AIEEE Since 2009

262693

Classroom: 194471 | Distance: 68222

Selections in NEET (UG)/
AIPMT/AIIMS Since 2012

22733

Classroom: 15409 | Distance: 7324

Admission Open for 2026-27

Target: JEE (Advanced) | JEE (Main) | NEET (UG) | PCCP (Class V to X)

100% Scholarship on the basis of Class 10th, 12th
& JEE (Main) 2026 %ile / AIR

☎ 0744-2777777 | 📞 73400 10345 | Follow Us: 📺 📧 📱 📧 📱 @ResonanceEdu | 📷 @Resonance_Edu

📍 REGISTERED & CORPORATE OFFICE (CIN: U80302RJ2007PLC024029):

CG Tower, A-46 & 52, IPIA, Near City Mall, Jhalawar Road, Kota (Rajasthan) - 324005

☎ 0744-2777777 | 📞 73400 10345 | 📧 contact@resonance.ac.in | 🌐 www.resonance.ac.in | Follow Us: 📺 📧 📱 📧 📱 @ResonanceEdu | 📷 @Resonance_Edu

This Solution was download from Resonance JEE (Main) 2026 Solution Portal

PART : MATHEMATICS

1. Evaluate the limit $\lim_{x \rightarrow 0} \frac{x^2 \sin^2 x}{x^2 - \sin^2 x}$
 (1) 2 (2) 3 (3) 4 (4) 6

Ans. (2)

Sol. $9 \left(-\frac{80}{72}\right) = -10 = \lim_{x \rightarrow 0} \frac{x^4}{\frac{1}{6} \cdot 2 \cdot x^4} = 3$

2. If domain of $f(x) = \sin^{-1} \left(\frac{x+[x]}{3}\right)$ where $[\cdot]$ denotes greatest integer function, is $[\alpha, \beta]$ then $(\alpha^2 + \beta^2)$ is :
 (1) 5 (2) 7 (3) 3 (4) 9

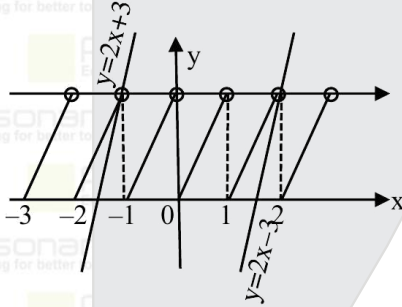
Ans. (1)

Sol. $-1 \leq \frac{x+[x]}{3} \leq 1$

$x + [x] \geq -3$ $x + [x] \leq 3$

$2x - \{x\} \geq -3$ $2x - \{x\} \leq 3$

$\{x\} \leq 2x + 3$ $\{x\} \geq 2x - 3$



$x \in [-1, 2) \Rightarrow \alpha = -1, \beta = 2$

$\therefore \alpha^2 + \beta^2 = 5$

3. Let $S = \{\theta \in (-2\pi, 2\pi) : \cos \theta + 1 = \sqrt{3} \sin \theta\}$. Then $\sum_{\theta \in S} \theta$ is equal to
 (1) $\frac{4\pi}{3}$ (2) $\frac{5\pi}{3}$ (3) $-\frac{4\pi}{3}$ (4) $-\frac{5\pi}{3}$

Ans. (3)

Sol. $\cos \theta + 1 = \sqrt{3} \sin \theta$

$\frac{1 - \tan^2 \frac{\theta}{2}}{1 + \tan^2 \frac{\theta}{2}} + 1 = \sqrt{3} \left(\frac{2 \tan \frac{\theta}{2}}{1 + \tan^2 \frac{\theta}{2}}\right)$

$2 = 2\sqrt{3} \tan \frac{\theta}{2}$

$\Rightarrow \tan \frac{\theta}{2} = \frac{1}{\sqrt{3}} \quad \theta \in (-2\pi, 2\pi), \frac{\theta}{2} \in (-\pi, \pi)$

$\frac{\theta}{2} = -\frac{5\pi}{6}, \frac{\pi}{6}$

$\theta = -\frac{5\pi}{3}, \frac{\pi}{3}$

Sum = $-\frac{5\pi}{3} + \frac{\pi}{3} = -\frac{4\pi}{3}$

Resonance Eduventures Ltd.

Reg. Office & Corp. Office : CG Tower, A-46 & 52, IPIA, Near City Mall, Jhalawar Road, Kota (Raj.) - 324005

Ph. No.: +91-744-2777777, 2777700 | FAX No. : +91-022-39167222

To Know more : sms RESO at 56677 | Website : www.resonance.ac.in | E-mail : contact@resonance.ac.in | CIN : U80302RJ2007PLC024029

Toll Free : 1800 258 5555 | 7340010333 | [facebook.com/ResonanceEdu](https://www.facebook.com/ResonanceEdu) | twitter.com/ResonanceEdu | www.youtube.com/resowatch | blog.resonance.ac.in

4. Find $I = \int_{-\pi/4}^{\pi/4} \frac{32\cos^4 \theta}{1+e^{\sin \theta}} d\theta$

(1) $3\pi + 8$

(2) $3\pi + 4$

(3) $4\pi + 3$

(4) $8\pi + 3$

Ans. (1)

Sol. Apply (P-5)

$$I = \int_{-\pi/4}^{\pi/4} \frac{32\cos^4 \theta}{1+e^{-\sin \theta}} d\theta$$

$$\text{Add } 2I = \int_{-\pi/4}^{\pi/4} 32\cos^4 \theta d\theta = 2 \int_0^{\pi/4} 32\cos^4 \theta d\theta$$

$$I = 32 \int_0^{\pi/4} \cos^4 \theta d\theta$$

$$= 8 \int_0^{\pi/4} (2\cos^2 \theta)^2 d\theta = 8 \int_0^{\pi/4} (1 + \cos 2\theta)^2 d\theta$$

$$= 8 \int_0^{\pi/4} 1 + 2\cos 2\theta + \cos^2 2\theta d\theta$$

$$= 8 \int_0^{\pi/4} 1 + 2\cos 2\theta + \frac{1 + \cos 4\theta}{2} d\theta$$

$$= 8 \left[\frac{3\theta}{2} + \frac{2\sin 2\theta}{2} + \frac{\sin 4\theta}{8} \right]_0^{\pi/4}$$

$$= 8 \left[\left(\frac{3\pi}{8} + 1 + 0 \right) \right] = 3\pi + 8$$

5. The value of $1^3 - 2^3 + 3^3 - 4^3 + \dots - 15^3$ is equal to :

(1) 1852

(2) 1854

(3) 1856

(4) 1860

Ans. (3)

Sol. $S = 1^3 - 2^3 + 3^3 - 4^3 + \dots - 15^3$

$$= (1^3 + 2^3 + \dots - 15^3) - 2 \times 2^3(1^3 + 2^3 + \dots - 7^3)$$

$$= \left(\frac{15 \times 16}{2} \right)^2 - 16 \left(\frac{7 \times 8}{2} \right)^2$$

$$= 1856$$

6. If coefficients of middle terms in the expansion $(1 + \alpha x)^{26} (1 - \alpha x)^{28}$ are equal then α is :-

(1) $\frac{1}{4}$

(2) $\frac{8}{27}$

(3) $\frac{7}{27}$

(4) $\frac{9}{28}$

Ans. (3)

Sol. ${}^{26}C_{13} \alpha^{13} = {}^{28}C_{14} \alpha^{14}$

$${}^{26}C_{13} = \frac{28}{14} \cdot {}^{27}C_{13} \alpha$$

$$\alpha = \frac{{}^{26}C_{13}}{2 \cdot {}^{27}C_{13}} = \frac{26!}{2 \cdot \frac{13!13!}{2 \cdot 14!}} = \frac{7}{27}$$

7. Let $f: \{1,2,3,4\} \rightarrow \{1, e, e^2, e^3\}$ is a strictly increasing and bijective function and $g: \{1, e, e^2, e^3\} \rightarrow \{1, \frac{1}{2}, \frac{1}{3}, \frac{1}{4}\}$,

strictly decreasing and bijective function. If $\phi(x) = [f^{-1}(g^{-1}(1/2))]^x$ then find $\int_0^1 (\phi(x) - x^2) dx$:

(1) $\frac{1}{\ln 2} - \frac{1}{3}$

(2) $\frac{3}{\ln 2} - \frac{1}{3}$

(3) $\frac{2}{\ln 2} - \frac{1}{3}$

(4) $\frac{4}{\ln 2} - \frac{1}{3}$

Ans. (1)

Sol. $f(x) = e^{x-1}$

$$g(x) = \frac{1}{\log_e x + 1}$$

$$f^{-1}(g^{-1}(1/2)) = f^{-1}(e) = 2$$

$$\phi(x) = 2^x$$

$$\therefore \int_0^1 (2^x - x^2) dx = \left(\frac{2^x}{\ln 2} - \frac{x^3}{3} \right)_0^1 = \frac{1}{\ln 2} - \frac{1}{3}$$

Resonance Eduventures Ltd.

Reg. Office & Corp. Office : CG Tower, A-46 & 52, IPIA, Near City Mall, Jhalawar Road, Kota (Raj.) - 324005

Ph. No.: +91-744-2777777, 2777700 | FAX No. : +91-022-39167222

To Know more : sms RESO at 56677 | Website : www.resonance.ac.in | E-mail : contact@resonance.ac.in | CIN : U80302RJ2007PLC024029

Toll Free : 1800 258 5555 | 7340010333 | [facebook.com/ResonanceEdu](https://www.facebook.com/ResonanceEdu) | twitter.com/ResonanceEdu | www.youtube.com/resowatch | blog.resonance.ac.in

8. The number of four letter words which can be formed using two vowels and two consonants from the world INCONSEQUENTIAL (words can be meaningful or meaning less) is :
 (1) 4092 (2) 4050 (3) 4090 (4) 4080

Ans. (1)

Sol. (I, I), (E, E), O, A, U (NNN), C, S, Q, T, L

V	C	
2 A	2 A	${}^2C_1 \times \frac{4!}{2!2!} = 12$
2 A	2 D	${}^2C_1 \times {}^6C_2 \times \frac{4!}{2!} = 360$
2 D	2 A	${}^5C_2 \times 1 \times \frac{4!}{2!} = 120$
2 D	2 D	${}^5C_2 \times {}^6C_2 \times 4! = 3600$

4092

9. If $\tan^{-1}(1 - \alpha) + \tan^{-1}(1 - \beta) = \frac{\pi}{4}$ & $\alpha = \frac{1}{\beta}$ then find $|\alpha + \beta|$:

(1) $\frac{3}{2}$

(2) 2

(3) $\frac{5}{2}$

(4) 3

Ans. (3)

Sol. $\tan^{-1}(1 - \alpha) = \frac{\pi}{4} - \tan^{-1}(1 - \beta)$

$$= \tan^{-1} 1 - \tan^{-1}(1 - \beta)$$

$$= \tan^{-1} \frac{1 - (1 - \beta)}{1 + (1 - \beta)}$$

$$\Rightarrow 1 - \alpha = \frac{\beta}{2 - \beta}$$

$$\therefore \beta = \frac{1}{\alpha}$$

$$\Rightarrow 2\alpha^2 - 3\alpha - 2 = 0$$

$$\Rightarrow \alpha = -\frac{1}{2} \text{ \& } \alpha = 2$$

$$\Rightarrow \beta = -2 \text{ \& } \beta = \frac{1}{2}$$

$$\therefore |\alpha + \beta| = \frac{5}{2}$$

10. $a_1, a_2, a_3, \dots, a_n$ are in A.P. and sum of first 10 terms is 160. $g_1, g_2, g_3, \dots, g_n$ are in G.P. where $g_1 + g_2 = 8$ if the first term of A.P. is equal to common ratio of G.P. and first term of G.P. is equal to common difference of A.P. then sum of all possible values of g_1 is equal to :

(1) $\frac{34}{9}$

(2) $\frac{28}{9}$

(3) $\frac{23}{3}$

(4) $\frac{28}{5}$

Ans. (1)

Sol. A.P. $\frac{10}{2} [2a + 9d] = 160 \Rightarrow 2a + 9d = 32 \dots (1)$

G.P. First term = A, Common ratio = R

$$g_1 + g_2 = 8$$

$$A + AR = 8 \dots (2)$$

given $a = R$ & $A = d$

$$\text{from (1)} \Rightarrow 2R + 9A = 32$$

$$A + AR = 8$$

$$A + A \left(\frac{32 - 9A}{2} \right) = 8$$

$$\Rightarrow 9A^2 - 34A + 16 = 0$$

$$\text{Sum} = \frac{34}{9}$$

Resonance Eduventures Ltd.

Reg. Office & Corp. Office : CG Tower, A-46 & 52, IPIA, Near City Mall, Jhalawar Road, Kota (Raj.) - 324005

Ph. No.: +91-744-2777777, 2777700 | FAX No. : +91-022-39167222

To Know more : sms RESO at 56677 | Website : www.resonance.ac.in | E-mail : contact@resonance.ac.in | CIN : U80302RJ2007PLC024029

Toll Free : 1800 258 5555 | 7340010333 | [facebook.com/ResonanceEdu](https://www.facebook.com/ResonanceEdu) | twitter.com/ResonanceEdu | www.youtube.com/resowatch | blog.resonance.ac.in

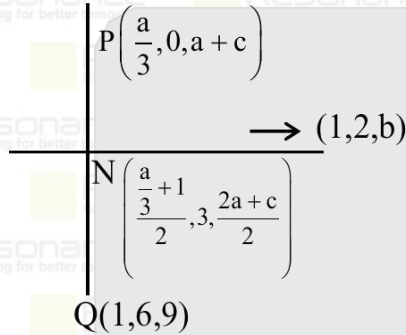
11. If $P\left(\frac{a}{3}, 0, a+c\right)$ is image of $Q(1, 6, a)$ with respect to line $L: \frac{x}{1} = \frac{y-1}{2} = \frac{z-a+1}{b}$, where $a > 0, b > 0$. If $S(\alpha, \beta, \gamma)$ is at a distance of $2\sqrt{14}$ from foot of perpendicular of Q on L , then $\alpha^2 + \beta^2 + \gamma^2$ is
 (1) 179 (2) 120 (3) 321 (4) 220

Ans. (1)

Sol. N will lie on line L

$$\frac{a+3}{6} = \frac{3-1}{2} = \frac{a+\frac{c}{2}-a+1}{b}$$

$$\Rightarrow a = 3\frac{c}{2} + 1 = b$$



And $\vec{PQ} \cdot (1, 2, b) = 0$

$$\left(\frac{a}{3} - 1\right) \cdot 1 + (0 - 6) \cdot 2 + c \cdot b = 0$$

$$-12 + 2b(b-1) = 0$$

$$\Rightarrow b = 3 \text{ or } b = -2 \text{ (reject)}$$

$$c = 4$$

$$L: \frac{x}{1} = \frac{y-1}{2} = \frac{z-2}{3} = \lambda$$

$$N(1, 3, 5)$$

$$\text{Let } S(\lambda, 2\lambda + 1, 3\lambda + 2)$$

$$SN = 2\sqrt{14} \Rightarrow (\lambda - 1)^2 + (2\lambda - 2)^2 + (3\lambda - 3)^2 = 56$$

$$14(\lambda - 1)^2 + 56 \Rightarrow (\lambda - 1)^2 = 4$$

$$\Rightarrow \lambda - 1 = \pm 2$$

$$\lambda = 3, -1$$

$$S(3, 7, 11) \text{ or } S(-1, -1, -1)$$

$$\alpha^2 + \beta^2 + \gamma^2 = 9 + 49 + 121$$

$$= 130 + 49 = 179$$

12. Let the set of all values of $K \in \mathbb{R}$ such that the equation, $z(\bar{z} + 2 + i) + K(2 + 3i) = 0, z \in \mathbb{C}$ has atleast one solution, be the interval $[\alpha, \beta]$. Then $9(\alpha + \beta) =$

(1) -10

(2) -8

(3) $10\sqrt{13}$

(4) $8\sqrt{13}$

Ans. (1)

Sol. Let $z = x + iy$ where $x, y \in \mathbb{R}$.

\therefore The equation becomes

$$(x^2 + y^2 + 2x - y + 2k) + i(x + 2y + 3k) = 0 = 0 + i0$$

$$\therefore x^2 + y^2 + 2x - y + 2k = 0 \quad \dots (1)$$

$$\& x + 2y + 3k = 0 \quad \dots (2)$$

So, on putting $x = -(2y + 3k)$ from

(2) in (1), we get

$$5y^2 + (12k - 5)y + (9k^2 - 4k) = 0$$

As y is real, so its

$$\text{Discriminate} \geq 0$$

Resonance Eduventures Ltd.

Reg. Office & Corp. Office : CG Tower, A-46 & 52, IPIA, Near City Mall, Jhalawar Road, Kota (Raj.) - 324005

Ph. No.: +91-744-2777777, 2777700 | FAX No. : +91-022-39167222

To Know more : sms RESO at 56677 | Website : www.resonance.ac.in | E-mail : contact@resonance.ac.in | CIN : U80302RJ2007PLC024029

Toll Free : 1800 258 5555 | 7340010333 | [facebook.com/ResonanceEdu](https://www.facebook.com/ResonanceEdu) | twitter.com/ResonanceEdu | www.youtube.com/resowatch | blog.resonance.ac.in

$$\Rightarrow 36k^2 + 40k - 25 = 0$$

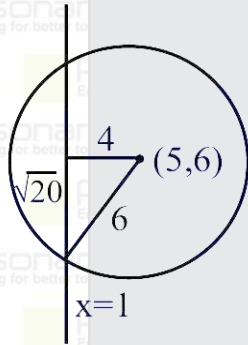
$$\therefore \frac{-40 - 20\sqrt{13}}{72} \leq k \leq \frac{-40 + 20\sqrt{13}}{72}$$

$$\text{So, } 9(\alpha + \beta) = 9\left(-\frac{80}{72}\right) = -10$$

13. Consider the circle $x^2 + y^2 + 2gx + 2fy + 25 = 0$ having centre on line $-2x + y = +4$ and radius 6 centre lie in Ist quadrant. If the line $x = 1$ cuts the circle at A and B then AB^2 is
 (1) 40 (2) 60 (3) 80 (4) 100

Ans. (3)

Sol. $x^2 + y^2 + 2gx + 2fy + 25 = 0$
 $2g - f = +4$ & $g^2 + f^2 - 25 = 36$
 solving $g = -5, f = -6$
 $\Rightarrow x^2 + y^2 - 10x - 12y + 25 = 0$



$$AB = 2\sqrt{20}$$

$$AB^2 = 80$$

14. If $x_1, x_2, x_3, \dots, x_{25}$ be 25 observations such that $\sum_{i=1}^{25} (x_i + 5)^2 = 2500$ and $\sum_{i=1}^{25} (x_i - 5)^2 = 1000$. Then the ratio of mean and standard deviation of the given observation, is
 (1) $\frac{1}{3}$ (2) $\frac{1}{2}$ (3) $\frac{1}{4}$ (4) $\frac{1}{5}$

Ans. (2)

Sol. $\sum x_i^2 + 10\sum x_i + 625 = 2500$
 $\sum x_i^2 - 10\sum x_i + 625 = 1000$
 $\Rightarrow \sum x_i^2 = 1125$
 $\sum x_i = 75$
 Mean $\bar{x} = \frac{\sum x_i}{25} = \frac{75}{25} = 3$

$$\text{Standard deviation} = \sqrt{\frac{\sum x_i^2}{25} - \left(\frac{\sum x_i}{25}\right)^2}$$

$$= \sqrt{\frac{1125}{25} - 9} = 6$$

$$\text{Ratio} \frac{1}{2}$$

Resonance Eduventures Ltd.

Reg. Office & Corp. Office : CG Tower, A-46 & 52, IPIA, Near City Mall, Jhalawar Road, Kota (Raj.) - 324005

Ph. No.: +91-744-2777777, 2777700 | FAX No. : +91-022-39167222

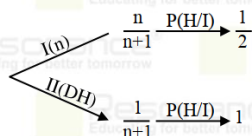
To Know more : sms RESO at 56677 | Website : www.resonance.ac.in | E-mail : contact@resonance.ac.in | CIN : U80302RJ2007PLC024029

Toll Free : 1800 258 5555 | 7340010333 | [facebook.com/ResonanceEdu](https://www.facebook.com/ResonanceEdu) | twitter.com/ResonanceEdu | www.youtube.com/resowatch | blog.resonance.ac.in

15. If there are $(n + 1)$ coins of which n coins are fair and one is double headed coin. A coin is randomly selected and tossed, if probability that head occurs is $\frac{9}{16}$ then n is :

- (1) 7 (2) 8 (3) 9 (4) 10

Ans. (1)



Sol.

$$\therefore \frac{n}{n+1} \cdot \frac{1}{2} + \frac{1}{n+1} \cdot 1 = \frac{9}{16}$$

$$\frac{n+2}{2(n+1)} = \frac{9}{16} \Rightarrow n = 7$$

16. Given point $P(6, 4\sqrt{3})$ satisfy hyperbola $\frac{x^2}{a^2} - \frac{y^2}{b^2} = 1$ where eccentricity is root of equation $9e^2 - 21e + 10 = 0$. Then find the length of latus rectum of hyperbola $\frac{x^2}{a^2} - \frac{y^2}{2(1+b^2)} = 1$.

- (1) $\frac{56}{3}$ (2) $\frac{68}{3}$ (3) $\frac{52}{3}$ (4) $\frac{70}{3}$

Ans. (2)

Sol. $9e^2 - 21e - 6e + 10 = 0$
 $3e(3e - 5) - 2(3e - 5) = 0$

$$e = \frac{2}{3}, \frac{5}{3}; e = \frac{5}{3}$$

$$\frac{25}{9} = 1 + \frac{b^2}{a^2} \Rightarrow \frac{b^2}{a^2} = \frac{16}{9}$$

$$\frac{36}{9\lambda} - \frac{48}{16\lambda} = 1 \Rightarrow \frac{4}{\lambda} - \frac{3}{\lambda} = 1 \Rightarrow \lambda = 1$$

$$b^2 = 16, a^2 = 9$$

$$\frac{x^2}{9} - \frac{y^2}{36} = 1$$

$$\frac{2b^2}{a} = \frac{2 \times 36}{3} = \frac{68}{3}$$

17. Given two lines

$$L_1: \frac{x-1}{3} = \frac{y-2}{2} = \frac{z+1}{1}$$

$$L_2: \frac{x+2}{1} = \frac{y-1}{1} = \frac{z}{1}$$

Third lines L_3 is perpendicular to both lines L_1 & L_2 . Find acute angle between lines L_3 & $\vec{v} = 2\hat{i} - \hat{j} - \hat{k}$

- (1) $\frac{\pi}{2}$ (2) $\frac{\pi}{4}$ (3) $\frac{\pi}{6}$ (4) $\frac{\pi}{3}$

Ans. (4)

Sol. DR of $L_3 = \vec{a}$

$$\vec{a} = \begin{vmatrix} \hat{i} & \hat{j} & \hat{k} \\ 3 & 2 & 1 \\ 1 & 1 & 1 \end{vmatrix} = \hat{i} - 2\hat{j} + \hat{k}$$

$$\cos \theta = \frac{\vec{a} \cdot \vec{v}}{|\vec{a}| |\vec{v}|} = \frac{(2+2-1)}{\sqrt{6}\sqrt{6}} = \frac{1}{2}$$

$$\theta = \frac{\pi}{3}$$

Resonance Eduventures Ltd.

Reg. Office & Corp. Office : CG Tower, A-46 & 52, IPIA, Near City Mall, Jhalawar Road, Kota (Raj.) - 324005

Ph. No.: +91-744-2777777, 2777700 | FAX No. : +91-022-39167222

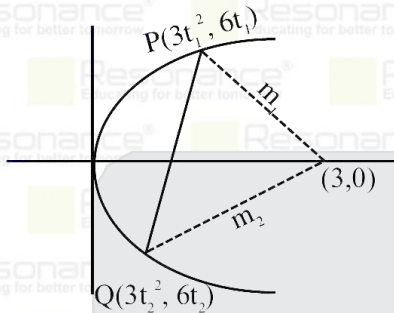
To Know more : sms RESO at 56677 | Website : www.resonance.ac.in | E-mail : contact@resonance.ac.in | CIN : U80302RJ2007PLC024029

Toll Free : 1800 258 5555 | 7340010333 | [facebook.com/ResonanceEdu](https://www.facebook.com/ResonanceEdu) | twitter.com/ResonanceEdu | www.youtube.com/resowatch | blog.resonance.ac.in

18. If ratio of 2-ordinates of points on the parabola $y^2 = 12x$ is 1:2 and length of chord joining these points is $3\sqrt{13}$, then find angle subtend by the chord at the focus of the parabola

- (1) $\tan^{-1}\frac{1}{2}$ (2) $\tan^{-1}\frac{3}{4}$ (3) $\tan^{-1}\frac{2}{3}$ (4) $\tan^{-1}\frac{1}{4}$

Ans. (2)
Sol.



$$\frac{6t_1}{6t_2} = \frac{1}{2}$$

$$t_2 = 2t_1$$

$$m_1 = \frac{6t_1}{3t_1^2 - 3} = \frac{2t_1}{t_1^2 - 1} = \text{not defined}$$

$$m_2 = \frac{2t_2}{t_2^2 - 1} = \frac{4t_1}{4t_1^2 - 1} = \frac{4}{3}$$

$$9 \times 13 = 9(t_1^2 - t_2^2)^2 + 36(t_1 - t_2)^2$$

$$13 = (t_1^2 - 4t_1^2)^2 + 4(t_1 - 2t_1)^2$$

$$13 = 9t_1^4 + 4t_1^2 \Rightarrow t_1^2 = 1$$

$$t_1 = 1, -1$$

$$\tan \theta = 3/4$$

19. Solution of differential equation

$$\frac{dy}{dx} + \frac{y(x - \sqrt{x^2 - 1})}{(x^2 - x\sqrt{x^2 - 1})} = \frac{x}{x^2 - x\sqrt{x^2 - 1}}$$

Satisfy condition $y(1) = 1$, then find $[y(\sqrt{5})]$.

(Here $[\cdot]$ denotes greatest integer function)

Ans. (3)

Sol.

$$\frac{dy}{dx} + \frac{y}{x} = \frac{1}{x - \sqrt{x^2 - 1}}$$

$$\frac{dy}{dx} + \frac{y}{x} = x + \sqrt{x^2 - 1}$$

$$\text{I.f} = e^{\ln x} = x$$

$$y \cdot x = \int (x + \sqrt{x^2 - 1}) x dx$$

$$= \frac{x^2}{2} + \frac{(x^2 - 1)^{3/2}}{3} + C$$

$$\text{Given } y(1) = 1$$

$$1 = \frac{1}{2} + C \Rightarrow C = \frac{1}{2}$$

$$[y(\sqrt{5})] = \left[\frac{\sqrt{5}}{2} + \frac{8}{3} + \frac{1}{2\sqrt{5}} \right] = 3$$

Resonance Eduventures Ltd.

Reg. Office & Corp. Office : CG Tower, A-46 & 52, IPIA, Near City Mall, Jhalawar Road, Kota (Raj.) - 324005

Ph. No.: +91-744-2777777, 2777700 | FAX No. : +91-022-39167222

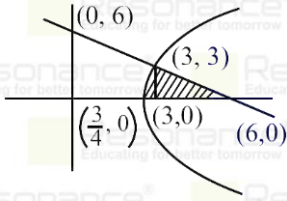
To Know more : sms RESO at 56677 | Website : www.resonance.ac.in | E-mail : contact@resonance.ac.in | CIN : U80302RJ2007PLC024029

Toll Free : 1800 258 5555 | 7340010333 | [facebook.com/ResonanceEdu](https://www.facebook.com/ResonanceEdu) | twitter.com/ResonanceEdu | www.youtube.com/resowatch | blog.resonance.ac.in

20. Find the area bounded by $0 \leq y \leq 6 - x, y^2 + 3 \leq 4x$ & $x > 0$, is

Ans. (9)

Sol. $A = \int_0^3 \left(6 - y - \frac{y^2+3}{4}\right) dy = 9$



21. Given that quadratic equation

$(k^2 - 15k + 27)x^2 + 9(k - 1)x + 18 = 0$ has one root twice of other. Then find length of latus rectum of parabola $y^2 = 6kx$

Ans. (12)

Sol. $(k^2 - 15k + 27)x^2 + 9(k - 1)x + 18 = 0$ $\begin{cases} \alpha \\ 2\alpha \end{cases}$

$$\alpha + 2\alpha = -\frac{9(k-1)}{k^2-15k+27} \Rightarrow \alpha = \frac{-3(k-1)}{k^2-15k+27}$$

$$\alpha(2\alpha) = \frac{18}{k^2-15k+27}$$

$$\Rightarrow 2\alpha^2 = \frac{18}{k^2-15k+27} \Rightarrow \frac{2 \cdot 9(k-1)^2}{(k^2-15k+27)^2} = \frac{18}{(k^2-15k+27)}$$

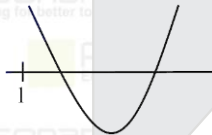
$$\Rightarrow (k-1)^2 = k^2 - 15k + 27 \Rightarrow k = 2$$

$$\text{LR} = 6k = 12$$

22. Consider e_1 and e_2 be roots of the equal $x^2 - ax + 2 = 0$ set of exhaustive values of 'a' for which e_1 and e_2 are eccentricities of hyperbolas then $a \in [\alpha, \beta)$ and set of values of 'a' for which e_1 and e_2 are eccentricity of the parabola and ellipse is (γ, ∞) then $(\alpha^2 + \beta^2 + \gamma^2)$ equal :

Ans. (26)

Sol.



$$f(x) = x^2 - ax + 2$$

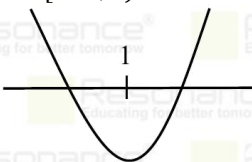
$$f(1) = 3 - a > 0 \Rightarrow a < 3$$

$$-\frac{b}{2a} > 1 \Rightarrow \frac{a}{2} > 1 \Rightarrow a > 2$$

$$D \geq 0 \Rightarrow a^2 - 8 \geq 0$$

$$a \in (-\infty, -2\sqrt{2}] \cup [2\sqrt{2}, \infty)$$

$$a \in [2\sqrt{2}, 3)$$



$$f(1) < 0$$

$$3 - a < 0$$

$$a \in (3, \infty)$$

$$\alpha = 2\sqrt{2}, \beta = 3, \gamma = 3$$

$$\alpha^2 + \beta^2 + \gamma^2 = 8 + 9 + 9 = 26$$

Resonance Eduventures Ltd.

Reg. Office & Corp. Office : CG Tower, A-46 & 52, IPIA, Near City Mall, Jhalawar Road, Kota (Raj.) - 324005

Ph. No.: +91-744-2777777, 2777700 | FAX No. : +91-022-39167222

To Know more : sms RESO at 56677 | Website : www.resonance.ac.in | E-mail : contact@resonance.ac.in | CIN : U80302RJ2007PLC024029

Toll Free : 1800 258 5555

7340010333

facebook.com/ResonanceEdu

twitter.com/ResonanceEdu

www.youtube.com/resowatch

blog.resonance.ac.in

23. Given vectors

$\vec{a} = \hat{i} + \hat{j} + \hat{k}$ & $\vec{b} = \hat{j} - \hat{k}$. Another vector \vec{c} satisfy equation $\vec{a} \cdot \vec{c} = 3$ & $\vec{a} \times \vec{c} = \vec{b}$ then find $\vec{a} \cdot (\vec{c} - 2\vec{b})$

Ans. (3)

Sol. $\vec{a} \times (\vec{a} \times \vec{c}) = \vec{a} \times \vec{b}$

$$3\vec{a} - 3\vec{c} = \vec{a} \times \vec{b}$$

$$\vec{c} = \frac{3\vec{a} - \vec{a} \times \vec{b}}{3}$$

$$\vec{a} \cdot \left(\frac{3\vec{a} - \vec{a} \times \vec{b}}{3} - 2\vec{b} \right)$$

$$\Rightarrow |\vec{a}|^2 - 2\vec{a} \cdot \vec{b} = 3 - 2(0) = 3$$




Resonance Eduventures Ltd.

Reg. Office & Corp. Office : CG Tower, A-46 & 52, IPIA, Near City Mall, Jhalawar Road, Kota (Raj.) - 324005

Ph. No.: +91-744-2777777, 2777700 | FAX No. : +91-022-39167222

To Know more : sms RESO at 56677 | Website : www.resonance.ac.in | E-mail : contact@resonance.ac.in | CIN : U80302RJ2007PLC024029

Toll Free : 1800 258 5555  7340010333  facebook.com/ResonanceEdu  twitter.com/ResonanceEdu  www.youtube.com/resowatch  blog.resonance.ac.in