

**PAPER-1 (B.E./B. TECH.) OF JEE (MAIN)**

**JEE (MAIN) 2018**

**CBT TEST PAPER**

**DATE : 15-04-2018**

**SUBJECT : PHYSICS,  
CHEMISTRY, MATHEMATICS**

**Resonance Eduventures Ltd.**

Registered & Corporate Office: CG Tower, A-46 & 52, IPIA, Near City Mall, Jhalawar Road, Kota (Raj.)-324005

Tel.No.: 0744-6607777, 3012100, 3012222, 6635555 | Fax: +91-022-39167222 | 08003 444 888

Website: www.resonance.ac.in | E-mail: contact@resonance.ac.in | CIN: U80302RJ2007PLC024029

# CONNECT WITH YOUR SUCCESS THROUGH RESONANCE

LIMCA  
BOOK of  
RECORDS

for perfect score  
in JEE (Main) 2017  
**360/360**

**4<sup>th</sup>**  
**AIR**  
NEET 2017  
**27<sup>th</sup>**  
**AIR**  
AIIMS 2017  
SANKEERTH S.

**6<sup>th</sup>**  
**AIR**  
JEE ADV 2017  
SAURAV YADAV

**1<sup>st</sup>**  
**AIR**  
JEE MAIN 2017  
KALPIT VEERWAL

**JEE (ADV.) 2017 ALL INDIA RANKS IN TOP 100 FROM CLASSROOM PROGRAM**



**AIR - 22**

ARPIT MENARIA  
Roll No. 13405464



**AIR - 29**

YASH JAIN  
Roll No. 15151117



**AIR - 48**

RITIK ROONGTA  
Roll No. 15102234



**AIR - 54**

SHASHANK KUMAR  
Roll No. 15172599



**AIR - 63**

SHIVAM GOYAL  
Roll No. 15102189



**AIR - 90**

NISARG BHATT  
Roll No. 15155942



**AIR - 92**

DIVYANSHU  
Roll No. 15172744



**AIR - 95**

PRAKHAR MANGAL  
Roll No. 13401340



**IMO** 2017  
**BRONZE MEDAL**  
Yash Sanjeev  
Roll No.: 16153892



**IPHO** 2017  
**SILVER MEDAL**  
Pawan Goyal  
Roll No.: 13401293



IJSO (Stage)-1  
NSEJS RESULT - 2018  
**AIR-1**  
Siddhant Mukherjee  
Roll No. 17437554

## ADMISSIONS OPEN

**Classes: V to XII & XII+**

**Target: JEE (Main+Advanced)**

**JEE (Main) | AIIMS/ NEET**

**Pre-foundation | Commerce & CLAT**

**Total No. of Selections**

**JEE (Adv) 2017**

**6241**

Classroom: 4095 | DLP + eLP: 2146

**NEET 2017**

**2975**

Classroom: 1724 | DLP + eLP: 1251

**JEE (Main) 2017**

**24519**

Classroom: 17800 | DLP + eLP: 6719

## ResoNET Dates

**15<sup>th</sup> & 22<sup>nd</sup> April 2018**

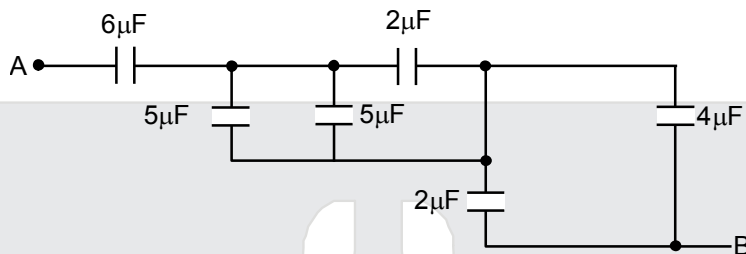
Test Timings: 9 AM to 12 Noon

**PHYSICS**

**Straight Objective Type**

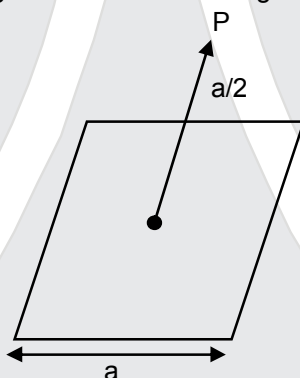
This section contains **30 multiple choice questions**. Each question has 4 choices (1), (2), (3) and (4) for its answer, out of which **Only One** is correct.

1. The equivalent capacitance between A and B in the circuit given below is :



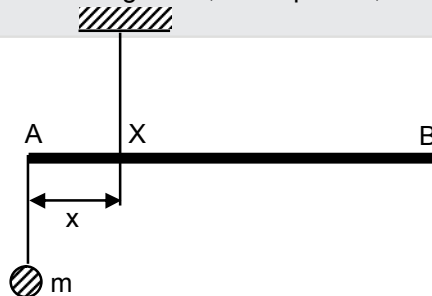
- (1)  $3.6\mu\text{F}$                       (2)  $2.4\mu\text{F}$                       (3)  $4.9\mu\text{F}$                       (4)  $5.4\mu\text{F}$

2. A charge  $Q$  is placed at a distance  $a/2$  above the centre of the square surface of edge  $a$  as shown in the figure.



- (1)  $\frac{Q}{6\epsilon_0}$                       (2)  $\frac{Q}{2\epsilon_0}$                       (3)  $\frac{Q}{3\epsilon_0}$                       (4)  $\frac{Q}{\epsilon_0}$

3. A uniform rod AB is suspended from a point X, at a variable distance  $x$  from A, as shown. To make the rod horizontal, a mass  $m$  is suspended from its end A. A set of  $(m,x)$  values is recorded. The appropriate variables that give a straight line, when plotted, are :



- (1)  $m,x^2$                       (2)  $m,\frac{1}{x^2}$                       (3)  $m,\frac{1}{x}$                       (4)  $m,x$

**Resonance Eduventures Limited**

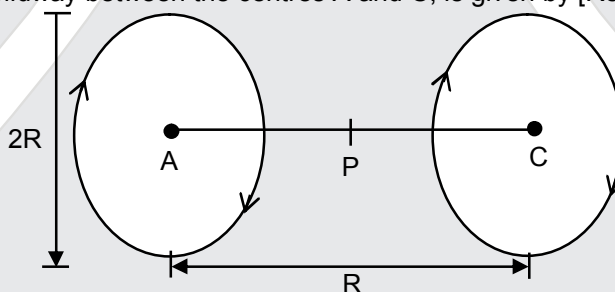
Registered & Corporate Office: CG Tower, A-46 & 52, IPIA, Near City Mall, Jhalawar Road, Kota (Raj.)-324005  
Tel.No.: 0744-6607777, 3012100, 3012222, 6635555 | Fax: +91-022-39167222 | CIN: U80302RJ2007PLC024029

To Know more: sms RESO at 56677 | contact@resonance.ac.in | www.resonance.ac.in

Page | 1 |

Toll Free : 1800 258 5555    WhatsApp: 08003 444 888    Facebook: facebook.com/ResonanceEdu    Twitter: twitter.com/ResonanceEdu    YouTube: www.youtube.com/resowatch    Blog: blog.resonance.ac.in

4. The energy required to remove the electron from a singly ionized Helium atom is 2.2 times the energy required to remove an electron from Helium atom. The total energy required to ionize the Helium atom completely is :  
 (1) 34eV (2) 20eV (3) 79eV (4) 109eV
5. A solution containing active cobalt  ${}^{60}_{27}\text{Co}$  having activity of 0.8  $\mu\text{Ci}$  and decay constant  $\lambda$  is injected in an animal's body. If 1  $\text{cm}^3$  of blood is drawn from the animal's body after 10 hrs of injection, the activity found was 300 decays per minute. What is the volume of blood that is flowing in the body ? ( $1\text{Ci} = 3.7 \times 10^{10}$  decays per second and at  $t = 10$  hrs  $e^{-\lambda t} = 0.84$ )  
 (1) 4 liters (2) 6 liters (3) 5 liters (4) 7 liters
6. In a common emitter configuration with suitable bias, it is given that  $R_L$  is the load resistance and  $R_{BE}$  is small signal dynamic resistance (input side). Then, voltage gain, current gain and power gain are given, respectively, by :  
 $\beta$  is current gain,  $I_B$ ,  $I_C$  and  $I_E$  are respectively base, collector and emitter currents.  
 (1)  $\beta \frac{R_L}{R_{BE}}, \frac{\Delta I_C}{\Delta I_B}, \beta^2 \frac{R_L}{R_{BE}}$  (2)  $\beta \frac{R_L}{R_{BE}}, \frac{\Delta I_E}{\Delta I_B}, \beta^2 \frac{R_L}{R_{BE}}$  (3)  $\beta^2 \frac{R_L}{R_{BE}}, \frac{\Delta I_C}{\Delta I_B}, \beta \frac{R_L}{R_{BE}}$  (4)  $\beta^2 \frac{R_L}{R_{BE}}, \frac{\Delta I_C}{\Delta I_E}, \beta^2 \frac{R_L}{R_{BE}}$
7. A body of mass  $m$  is moving in a circular orbit of radius  $R$  about a planet of mass  $M$ . At some instant, it splits into two equal masses. The first mass moves in a circular orbit of radius  $\frac{R}{2}$  and the other mass, in a circular orbit of radius  $\frac{3R}{2}$ . The difference between the final and initial total energies is :  
 (1)  $+\frac{Gm}{6R}$  (2)  $-\frac{GMm}{2R}$  (3)  $-\frac{GMm}{6R}$  (4)  $\frac{GMm}{2R}$
8. A Helmholtz coil has a pair of loops, each with  $N$  turns and radius  $R$ . They are placed coaxially at distance  $R$  and the same current  $I$  flows through the loops in the same direction. The magnitude of magnetic field at  $P$ , midway between the centres  $A$  and  $C$ , is given by [Refer to figure given below]:



- (1)  $\frac{8N\mu_0 I}{5^{1/2}R}$  (2)  $\frac{4N\mu_0 I}{5^{3/2}R}$  (3)  $\frac{4N\mu_0 I}{5^{1/2}R}$  (4)  $\frac{8N\mu_0 I}{5^{3/2}R}$
9. A thin uniform tube is bent into a circle of radius  $r$  in the vertical plane. Equal volumes of two immiscible liquids, whose densities are  $\rho_1$  and  $\rho_2$  ( $\rho_1 > \rho_2$ ), fill half the circle. The angle  $\theta$  between the radius vector passing through the common interface and the vertical is :  
 (1)  $\theta = \tan^{-1} \frac{\pi}{2} \left( \frac{\rho_1 + \rho_2}{\rho_1 - \rho_2} \right)$  (2)  $\theta = \tan^{-1} \left[ \frac{\pi}{2} \left( \frac{\rho_1 - \rho_2}{\rho_1 + \rho_2} \right) \right]$   
 (3)  $\theta = \tan^{-1} \frac{\pi}{2} \left( \frac{\rho_2}{\rho_1} \right)$  (4)  $\theta = \tan^{-1} \pi \left( \frac{\rho_1}{\rho_2} \right)$

## Resonance Eduventures Limited

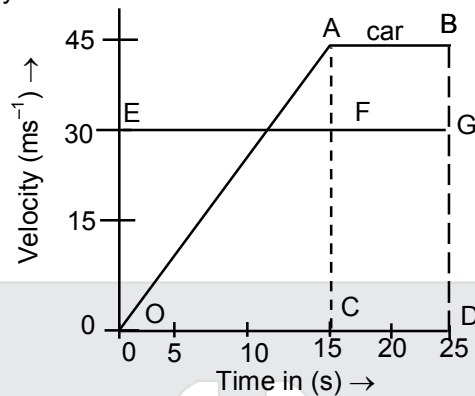
Registered & Corporate Office: CG Tower, A-46 & 52, IPIA, Near City Mall, Jhalawar Road, Kota (Raj.)-324005  
 Tel.No.: 0744-6607777, 3012100, 3012222, 6635555 | Fax: +91-022-39167222 | CIN: U80302RJ2007PLC024029

To Know more: sms RESO at 56677 | contact@resonance.ac.in | www.resonance.ac.in

Page | 2 |

Toll Free : 1800 258 5555 | WhatsApp: 08003 444 888 | Facebook: facebook.com/ResonanceEdu | Twitter: twitter.com/ResonanceEdu | YouTube: www.youtube.com/resowatch | Blog: blog.resonance.ac.in

10. The velocity-time graphs of a car and a scooter are shown in the figure. (i) The difference between the distance travelled by the car and the scooter in 15 s and (ii) the time at which the car will catch up with the scooter are, respectively.




- (1) 112.5 m and 22.5 s  
 (2) 337.5 m and 25 s  
 (3) 225.5 m and 10 s  
 (4) 112.5 m and 15 s
11. A monochromatic beam of light has a frequency  $\nu = \frac{3}{2\pi} \times 10^{12}$  Hz and is propagating along the direction

$\frac{\hat{i} + \hat{j}}{\sqrt{2}}$ . It is polarized along the  $\hat{k}$  direction. The acceptable form the magnetic field is :

- (1)  $\frac{E_0}{C} \left( \frac{\hat{i} - \hat{j}}{\sqrt{2}} \right) \cos \left[ 10^4 \frac{(\hat{i} - \hat{j})}{\sqrt{2}} \cdot \vec{r} - (3 \times 10^{12}) t \right]$
- (2)  $\frac{E_0}{C} \hat{k} \cos \left[ 10^4 \frac{(\hat{i} + \hat{j})}{\sqrt{2}} \cdot \vec{r} + (3 \times 10^{12}) t \right]$
- (3)  $\frac{E_0}{C} \frac{(\hat{i} - \hat{j})}{\sqrt{2}} \cos \left[ 10^4 \frac{(\hat{i} + \hat{j})}{\sqrt{2}} \cdot \vec{r} + (3 \times 10^{12}) t \right]$
- (4)  $\frac{E_0}{C} \frac{(\hat{i} + \hat{j} + \hat{k})}{\sqrt{3}} \cos \left[ 10^4 \frac{(\hat{i} + \hat{j})}{\sqrt{2}} \cdot \vec{r} + (3 \times 10^{12}) t \right]$

## Resonance Eduventures Limited

Registered & Corporate Office: CG Tower, A-46 & 52, IPIA, Near City Mall, Jhalawar Road, Kota (Raj.)-324005  
 Tel.No.: 0744-6607777, 3012100, 3012222, 6635555 | Fax: +91-022-39167222 | CIN: U80302RJ2007PLC024029

12. Take the mean distance of the moon and the sun from the earth to be  $0.4 \times 10^6$  km and  $150 \times 10^6$  km respectively. Their masses are  $8 \times 10^{22}$  kg and  $2 \times 10^{30}$  kg respectively. The radius of the earth is 6400 km. Let  $\Delta F_1$  be the difference in the forces exerted by the moon at the nearest and farthest point on the earth and  $\Delta F_2$  be the difference in the force exerted by the sun at the nearest and farthest points on the earth. Then, the number closest to  $\frac{\Delta F_1}{\Delta F_2}$  is :
- (1) 6 (2)  $10^{-2}$  (3) 2 (4) 0.6
13. A planoconvex lens becomes an optical system of 28 cm focal length when its plane surface is silvered and illuminated from left to right as shown in fig-A  
If the same lens is instead silvered on the curved surface and illuminated from other side as in fig. B, it acts like an optical system of focal length 10 cm. The refractive index of the material of lens is:
- 
- (1) 1.55 (2) 1.50 (3) 1.75 (4) 1.51
14. One mole of an ideal monoatomic gas is compressed isothermally in a rigid vessel to double its pressure at room temperature,  $27^\circ\text{C}$ . The done on the gas will be :
- (1) 300R (2)  $300R \ln 2$  (3)  $300 \ln 6$  (4)  $300R \ln 7$
15. An automobile, travelling at 40 km/h, can be stopped at a distance of 40 m by applying brakes. If the same automobile is travelling at 80 km/h, the minimum stopping distance, in metres, is (assume no skidding) :
- (1) 150m (2) 100m (3) 75m (4) 160m
16. A carnot's engine works as a refrigerator between 250K and 300K. It receives 500 cal heat from the reservoir at the lower temperature. The amount of work done in each cycle to operate the refrigerator is
- (1) 772 J (2) 420 J (3) 2100 J (4) 2520 J
17. In a screw gauge, 5 complete rotations of the screw cause it to move a linear distance of 0.25 cm. There are 100 circular scale divisions. The thickness of a wire measured by this screw gauge gives a reading of 4 main scale divisions and 30 circular scale divisions. Assuming negligible zero error, the thickness of the wire is :
- (1) 0.4300 cm (2) 0.3150 cm (3) 0.0430 cm (4) 0.2150 cm
18. The number of amplitude modulated broadcast stations that can be accommodated in a 300 kHz band width for the highest modulating frequency 15 kHz will be :
- (1) 15 (2) 20 (3) 8 (4) 10
19. An ideal capacitor of capacitance  $0.2 \mu\text{F}$  is charged to a potential difference of 10 V. The charging battery is then disconnected. The capacitor is then connected to an ideal inductor of self inductance 0.5 mH. The current at a time when the potential difference across the capacitor is 5V is :
- (1) 0.15 A (2) 0.17 A (3) 0.34 A (4) 0.25 A
20. Light of wavelength 550 nm falls normally on a slit of width  $22.0 \times 10^{-5}$  cm. The angular position of the second minima from the central maximum will be (in radians) :
- (1)  $\frac{\pi}{4}$  (2)  $\frac{\pi}{8}$  (3)  $\frac{\pi}{12}$  (4)  $\frac{\pi}{6}$

## Resonance Eduventures Limited

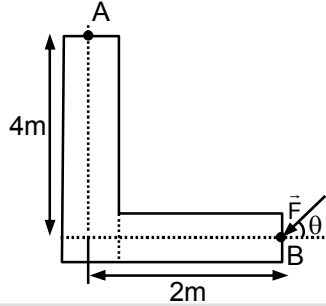
Registered & Corporate Office: CG Tower, A-46 & 52, IPIA, Near City Mall, Jhalawar Road, Kota (Raj.)-324005  
Tel.No.: 0744-6607777, 3012100, 3012222, 6635555 | Fax: +91-022-39167222 | CIN: U80302RJ2007PLC024029

To Know more: sms RESO at 56677 | contact@resonance.ac.in | www.resonance.ac.in

Page | 4 |

Toll Free : 1800 258 5555 | WhatsApp: 08003 444 888 | Facebook: facebook.com/ResonanceEdu | Twitter: twitter.com/ResonanceEdu | YouTube: www.youtube.com/resowatch | Blog: blog.resonance.ac.in

21. A force of 40 N acts on a point B at the end of an L-shaped object as shown in the figure. The angle  $\theta$  that will produce maximum moment of the force about point A is given by :

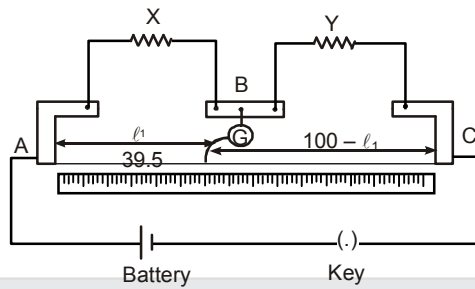


- (1)  $\tan \theta = 4$                       (2)  $\tan \theta = \frac{1}{4}$                       (3)  $\tan \theta = \frac{1}{2}$                       (4)  $\tan \theta = 2$
22. A tuning fork vibrates with frequency 256 Hz and gives one beat per second with the third normal mode of vibration of an open pipe. What is the length of the pipe ? (Speed of sound in air is  $340 \text{ ms}^{-1}$ )  
 (1) 220 cm                      (2) 200 cm                      (3) 190 cm                      (4) 180 cm
23. A body of mass  $M$  and charge  $q$  is connected to a spring of spring constant  $k$ . It is oscillating along  $x$ -direction about its equilibrium position, taken to be at  $x = 0$ , with an amplitude  $A$ . An electric field  $E$  is applied along the  $x$ -direction. Which of the following statements is **correct**?
- (1) The total energy of the system is  $\frac{1}{2} m\omega^2 A^2 + \frac{1}{2} \frac{q^2 E^2}{k}$ .
- (2) The new equilibrium position is at a distance  $\frac{2qE}{k}$  from  $x = 0$ .
- (3) The new equilibrium position is at a distance  $\frac{qE}{2k}$  from  $x = 0$ .
- (4) The total energy of the system is  $\frac{1}{2} m\omega^2 A^2 - \frac{1}{2} \frac{q^2 E^2}{k}$ .
24. A given object takes  $n$  times more time to slide down a  $45^\circ$  rough inclined plane as it takes to slide down a perfectly smooth  $45^\circ$  incline. The coefficients of kinetic friction between the object and the incline is :
- (1)  $\sqrt{1 - \frac{1}{n^2}}$                       (2)  $1 - \frac{1}{n^2}$                       (3)  $\frac{1}{2 - n^2}$                       (4)  $\sqrt{\frac{1}{1 - n^2}}$
25. The relative error in the determination of the surface area of a sphere is  $\alpha$ . Then the relative error in the determination of its volume is :
- (1)  $\frac{3}{2} \alpha$                       (2)  $\frac{2}{3} \alpha$                       (3)  $\alpha$                       (4)  $\frac{5}{2} \alpha$

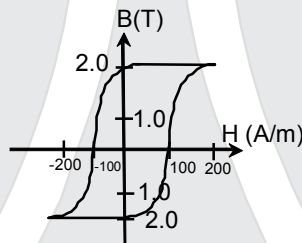
## Resonance Eduventures Limited

Registered & Corporate Office: CG Tower, A-46 & 52, IPIA, Near City Mall, Jhalawar Road, Kota (Raj.)-324005  
 Tel.No.: 0744-6607777, 3012100, 3012222, 6635555 | Fax: +91-022-39167222 | CIN: U80302RJ2007PLC024029

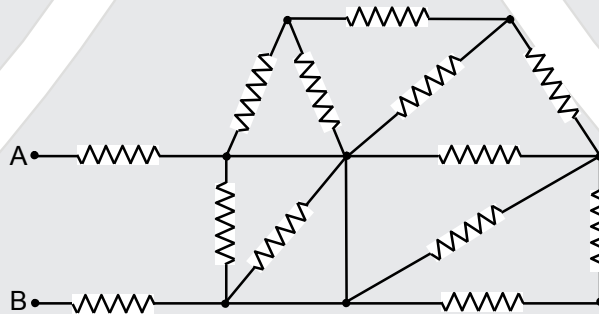
26. In a meter bridge as shown in the figure it is given that resistance  $Y = 12.5 \Omega$  and that the balance is obtained at a distance 39.5 cm from end A (by Jockey J). After interchanging the resistances X and Y a new balance point is found at a distance  $l_2$  from end A. What are the values of X and  $l_2$ ?



- (1)  $19.15 \Omega$  and 39.5 cm  
 (2)  $8.16 \Omega$  and 60.5 cm  
 (3)  $8.16 \Omega$  and 39.5 cm  
 (4)  $19.15 \Omega$  and 60.5 cm
27. The B-H curve for a ferromagnet is shown in the figure. The ferromagnet is placed inside a long solenoid with 1000 turns/cm. The current that should be passed in the solenoid to demagnetise the ferromagnet completely is :



- (1) 2 mA  
 (2)  $20 \mu\text{A}$   
 (3) 1 mA  
 (4)  $40 \mu\text{A}$
28. In the given circuit all resistances are of value of R ohm each. The equivalent resistance between A and B is :



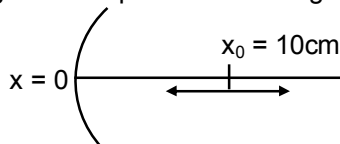
- (1)  $\frac{5R}{2}$   
 (2)  $3R$   
 (3)  $\frac{5R}{3}$   
 (4)  $2R$

## Resonance Eduventures Limited

Registered & Corporate Office: CG Tower, A-46 & 52, IPIA, Near City Mall, Jhalawar Road, Kota (Raj.)-324005  
 Tel.No.: 0744-6607777, 3012100, 3012222, 6635555 | Fax: +91-022-39167222 | CIN: U80302RJ2007PLC024029



29. A particle is oscillating on the x-axis with an amplitude 2cm about the point  $x_0 = 10\text{cm}$  with a frequency  $\omega$ . A concave mirror of focal length 5cm is placed at the origin (see figure).



Identify the correct statements?

- (A) The image executes periodic motion  
 (B) The image executes non-periodic motion  
 (C) The turning points of the image are asymmetric w.r.t. the image of the point at  $x = 10\text{ cm}$ .

(D) The distance between the turning points of the oscillation of the image is  $\frac{100}{21}\text{ cm}$ .

- (1) (B, C)                      (2) (A, C, D)                      (3) (A, D)                      (4) (B, D)

30. Two electrons are moving with non-relativistic speeds perpendicular to each other. If corresponding de Broglie wavelengths are  $\lambda_1$  and  $\lambda_2$  their de Broglie wavelength in the frame of reference attached to their centre of mass is :

(1)  $\frac{1}{\lambda_{\text{CM}}} = \frac{1}{\lambda_1} + \frac{1}{\lambda_2}$                       (2)  $\lambda_{\text{CM}} = \frac{2\lambda_1\lambda_2}{\sqrt{\lambda_1^2 + \lambda_2^2}}$                       (3)  $\lambda_{\text{CM}} = \lambda_1 = \lambda_2$                       (4)  $\lambda_{\text{CM}} = \left(\frac{\lambda_1 + \lambda_2}{2}\right)$

## Resonance Eduventures Limited

Registered & Corporate Office: CG Tower, A-46 & 52, IPIA, Near City Mall, Jhalawar Road, Kota (Raj.)-324005  
 Tel.No.: 0744-6607777, 3012100, 3012222, 6635555 | Fax: +91-022-39167222 | CIN: U80302RJ2007PLC024029

To Know more: sms RESO at 56677 | contact@resonance.ac.in | www.resonance.ac.in

Page | 7 |

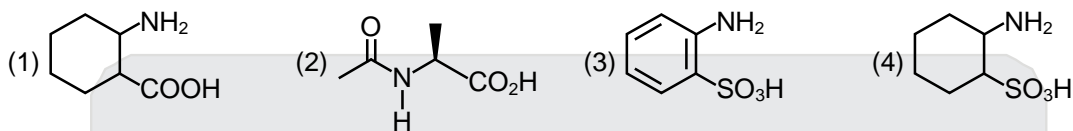
Toll Free : 1800 258 5555    08003 444 888    facebook.com/ResonanceEdu    twitter.com/ResonanceEdu    www.youtube.com/resowatch    blog.resonance.ac.in

## CHEMISTRY

### Straight Objective Type

This section contains **30 multiple choice questions**. Each question has 4 choices (1), (2), (3) and (4) for its answer, out of which **Only One** is correct.

1. Which of the following will not exist in zwitter ionic form at pH = 7 ?



2. A sample of  $\text{NaClO}_3$  is converted by heat to  $\text{NaCl}$  with a loss of 0.16 g of oxygen. The residue is dissolved in water and precipitated as  $\text{AgCl}$ . The mass of  $\text{AgCl}$  (in g) obtained will be : (Given: Molar mass of  $\text{AgCl} = 143.5 \text{ g mol}^{-1}$ )

- (1) 0.35 (2) 0.54 (3) 0.41 (4) 0.48

3. For which of the following reactions,  $\Delta H$  is equal to  $\Delta U$  ?

- (1)  $\text{N}_2(\text{g}) + 3\text{H}_2(\text{g}) \rightarrow 2\text{NH}_3(\text{g})$  (2)  $2\text{HI}(\text{g}) \rightarrow \text{H}_2(\text{g}) + \text{I}_2(\text{g})$   
(3)  $2\text{SO}_2(\text{g}) + \text{O}_2(\text{g}) \rightarrow 2\text{SO}_3(\text{g})$  (4)  $2\text{NO}_2(\text{g}) \rightarrow \text{N}_2\text{O}_4(\text{g})$

4.  $\text{N}_2\text{O}_5$  decomposes to  $\text{NO}_2$  and  $\text{O}_2$  and follows first order kinetics. After 50 minutes, the pressure inside the vessel increases from 50 mm Hg to 87.5 mm Hg. The pressure of the gaseous mixture after 100 minute at constant temperature will be :

- (1) 136.25 mm Hg (2) 106.25 mm Hg (3) 175.0 mm Hg (4) 116.25 mm Hg

5. In the molecular orbital diagram for the molecular ion,  $\text{N}_2^+$ , the number of electrons in the  $\sigma_{2p}$  molecular orbital is :

- (1) 0 (2) 2 (3) 3 (4) 1

6. Which of the following will most readily give the dehydrohalogenation product ?



7. Identify the pair in which the geometry of the species is T-shape and square-pyramidal, respectively :






- (1)  $\text{ICl}_2^-$  and  $\text{ICl}_5$  (2)  $\text{IO}_3^-$  and  $\text{IO}_2\text{F}_2^-$  (3)  $\text{ClF}_3$  and  $\text{IO}_4^-$  (4)  $\text{XeOF}_2$  and  $\text{XeOF}_4$

## Resonance Eduventures Limited

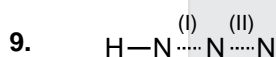
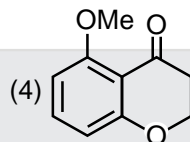
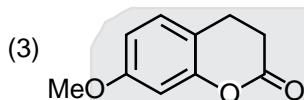
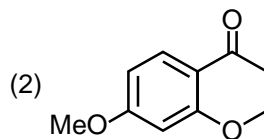
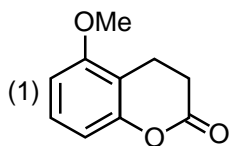
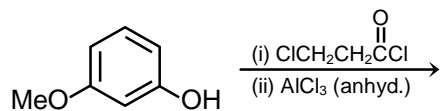
Registered & Corporate Office: CG Tower, A-46 & 52, IPIA, Near City Mall, Jhalawar Road, Kota (Raj.)-324005  
Tel.No.: 0744-6607777, 3012100, 3012222, 6635555 | Fax: +91-022-39167222 | CIN: U80302RJ2007PLC024029

To Know more: sms RESO at 56677 | contact@resonance.ac.in | www.resonance.ac.in

Page | 8 |

Toll Free : 1800 258 5555  08003 444 888  facebook.com/ResonanceEdu  twitter.com/ResonanceEdu  www.youtube.com/resowatch  blog.resonance.ac.in

8. The major product of the following reaction is :



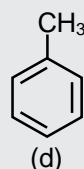
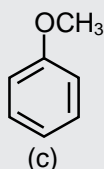
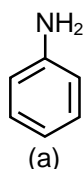
In hydrogen azide (above) the bond orders of bonds (I) and (II) are :

- |     |     |      |     |     |      |
|-----|-----|------|-----|-----|------|
|     | (I) | (II) |     | (I) | (II) |
| (1) | < 2 | > 2  | (2) | > 2 | > 2  |
| (3) | > 2 | < 2  | (4) | < 2 | < 2  |

10. For  $\text{Na}^+$ ,  $\text{Mg}^{2+}$ ,  $\text{F}^-$  and  $\text{O}^{2-}$ ; the correct order of increasing ionic radii is :

- |   |   |
|---|---|
| (1) $\text{O}^{2-} < \text{F}^- < \text{Na}^+ < \text{Mg}^{2+}$ | (2) $\text{Na}^+ < \text{Mg}^{2+} < \text{F}^- < \text{O}^{2-}$ |
| (3) $\text{Mg}^{2+} < \text{Na}^+ < \text{F}^- < \text{O}^{2-}$ | (4) $\text{Mg}^{2+} < \text{O}^{2-} < \text{Na}^+ < \text{F}^-$ |

11. The increasing order of nitration of the following compounds is :



- |                           |                           |
|---------------------------|---------------------------|
| (1) (a) < (b) < (d) < (c) | (2) (a) < (b) < (c) < (d) |
| (3) (b) < (a) < (c) < (d) | (4) (b) < (a) < (d) < (c) |

12. The correct match between items of List-I and List-II is :






- |  |   |
|--|---|
| List-I   | List-II                                 |
| (A) Coloured impurity                          | (P) Steam distillation                  |
| (B) Mixture of o-nitrophenol and p-nitrophenol | (Q) Fractional distillation             |
| (C) Crude Naphtha                              | (R) Charcoal treatment                  |
| (D) Mixture of glycerol and sugars             | (S) Distillation under reduced pressure |
| (1) (A)-(R), (B)-(S), (C)-(P), (D)-(Q)         | (2) (A)-(P), (B)-(S), (C)-(R), (D)-(Q)  |
| (3) (A)-(R), (B)-(P), (C)-(Q), (D)-(S)         | (4) (A)-(R), (B)-(P), (C)-(S), (D)-(Q)  |

## Resonance Eduventures Limited

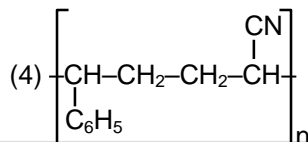
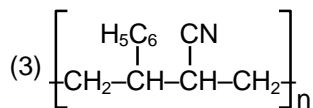
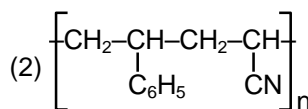
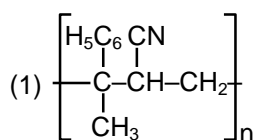
Registered & Corporate Office: CG Tower, A-46 & 52, IPIA, Near City Mall, Jhalawar Road, Kota (Raj.)-324005  
Tel.No.: 0744-6607777, 3012200, 3012222, 6635555 | Fax: +91-022-39167222 | CIN: U80302RJ2007PLC024029

To Know more: sms RESO at 56677 | contact@resonance.ac.in | www.resonance.ac.in

Page | 9 |

Toll Free : 1800 258 5555  08003 444 888  facebook.com/ResonanceEdu  twitter.com/ResonanceEdu  www.youtube.com/resowatch  blog.resonance.ac.in

13. The copolymer formed by addition polymerization of styrene and acrylonitrile in the presence of peroxide is :



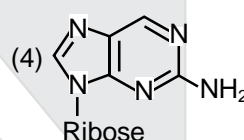
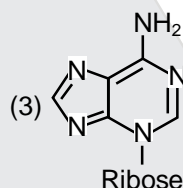
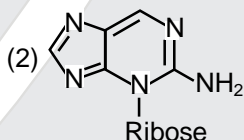
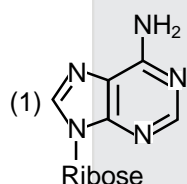
14. Which of the following is a Lewis acid ?

- (1)  $\text{PH}_3$                       (2)  $\text{NF}_3$                       (3)  $\text{NaH}$                       (4)  $\text{B}(\text{CH}_3)_3$

15. Which of the following statements about colloids is **False** ?

- (1) When silver nitrate solution is added to potassium iodide solution a negatively charged colloidal solution is formed.  
 (2) Freezing point of colloidal solution is lower than true solution at same concentration of a solute.  
 (3) Colloidal particles can pass through ordinary filter paper.  
 (4) When excess of electrolyte is added to colloidal solution, colloidal particle will be precipitated.

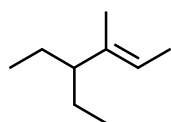
16. Which of the following is the correct structure of Adenosine ?



17. The correct combination is :

- (1)  $[\text{NiCl}_4]^{2-}$  – square-planar ;  $[\text{Ni}(\text{CN})_4]^{2-}$  – paramagnetic  
 (2)  $[\text{Ni}(\text{CN})_4]^{2-}$  – tetrahedral ;  $[\text{Ni}(\text{CO})_4]^{2-}$  – paramagnetic  
 (3)  $[\text{NiCl}_4]^{2-}$  – paramagnetic ;  $[\text{Ni}(\text{CO})_4]$  – tetrahedral  
 (4)  $[\text{NiCl}_4]^{2-}$  – diamagnetic ;  $[\text{Ni}(\text{CO})_4]$  – square-planar

18. The IUPAC name of the following compound is :








- (1) 3-ethyl-4-methylhex-4-ene                      (2) 4,4-diethyl-3-methylbut-2-ene  
 (3) 4-methyl-3-ethylhex-4-ene                      (4) 4-ethyl-3-methylhex-2-ene

## Resonance Eduventures Limited

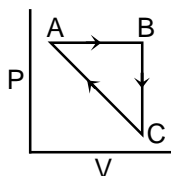
Registered & Corporate Office: CG Tower, A-46 & 52, IPIA, Near City Mall, Jhalawar Road, Kota (Raj.)-324005  
 Tel.No.: 0744-6607777, 3012100, 3012222, 6635555 | Fax: +91-022-39167222 | CIN: U80302RJ2007PLC024029

To Know more: sms RESO at 56677 | contact@resonance.ac.in | www.resonance.ac.in

Page | 10 |

Toll Free : 1800 258 5555  08003 444 888  facebook.com/ResonanceEdu  twitter.com/ResonanceEdu  www.youtube.com/resowatch  blog.resonance.ac.in

19. An ideal gas undergoes a cyclic process as shown in Figure.



$$\Delta U_{BC} = -5 \text{ kJ mol}^{-1}, q_{AB} = 2 \text{ kJ mol}^{-1}$$

$$W_{AB} = -5 \text{ kJ mol}^{-1}, W_{CA} = 3 \text{ kJ mol}^{-1}$$

Heat absorbed by the system during process CA is :

- (1)  $-5 \text{ kJ mol}^{-1}$       (2)  $+5 \text{ kJ mol}^{-1}$       (3)  $18 \text{ kJ mol}^{-1}$       (4)  $-18 \text{ kJ mol}^{-1}$
20. Ejection of the photoelectron from metal in the photoelectric effect experiment can be stopped by applying  $0.5 \text{ V}$  when the radiation of  $250 \text{ nm}$  is used. The work function of the metal is :
- (1)  $4 \text{ eV}$       (2)  $5.5 \text{ eV}$       (3)  $4.5 \text{ eV}$       (4)  $5 \text{ eV}$
21. In graphite and diamond, the percentage of p-characters of the hybrid orbitals in hybridization are respectively :
- (1) 33 and 25      (2) 67 and 75      (3) 50 and 75      (4) 33 and 75
22. When an electric current is passed through acidified water,  $112 \text{ mL}$  of hydrogen gas at N.T.P was collected at the cathode in 965 seconds. The current passed, in ampere, is :
- (1) 2.0      (2) 0.1      (3) 0.5      (4) 1.0
23. The minimum volume of water required to dissolve  $0.1 \text{ g}$  lead(II) chloride to get a saturated solution ( $K_{sp}$  of  $\text{PbCl}_2 = 3.2 \times 10^{-8}$  ; atomic mass of  $\text{Pb} = 207 \text{ u}$ ) is :
- (1)  $1.798 \text{ L}$       (2)  $0.36 \text{ L}$       (3)  $17.95 \text{ L}$       (4)  $0.18 \text{ L}$
24. In which of the following reactions, an increase in the volume of the container will favour the formation of products ?
- (1)  $4\text{NH}_3(\text{g}) + 5\text{O}_2(\text{g}) \rightleftharpoons 4\text{NO}(\text{g}) + 6\text{H}_2\text{O}(\ell)$
- (2)  $2\text{NO}_2(\text{g}) \rightleftharpoons 2\text{NO}(\text{g}) + \text{O}_2(\text{g})$
- (3)  $3\text{O}_2(\text{g}) \rightleftharpoons 2\text{O}_3(\text{g})$
- (4)  $\text{H}_2(\text{g}) + \text{I}_2(\text{g}) \rightleftharpoons 2\text{HI}(\text{g})$
25. The decreasing order of bond angles in  $\text{BF}_3$ ,  $\text{NH}_3$ ,  $\text{PF}_3$  and  $\text{I}_3^-$  is :
- (1)  $\text{I}_3^- > \text{BF}_3 > \text{NH}_3 > \text{PF}_3$       (2)  $\text{BF}_3 > \text{I}_3^- > \text{PF}_3 > \text{NH}_3$
- (3)  $\text{BF}_3 > \text{NH}_3 > \text{PF}_3 > \text{I}_3^-$       (4)  $\text{I}_3^- > \text{NH}_3 > \text{PF}_3 > \text{BF}_3$

## Resonance Eduventures Limited

Registered & Corporate Office: CG Tower, A-46 & 52, IPIA, Near City Mall, Jhalawar Road, Kota (Raj.)-324005  
Tel.No.: 0744-6607777, 3012100, 3012222, 6635555 | Fax: +91-022-39167222 | CIN: U80302RJ2007PLC024029

To Know more: sms RESO at 56677 | contact@resonance.ac.in | www.resonance.ac.in

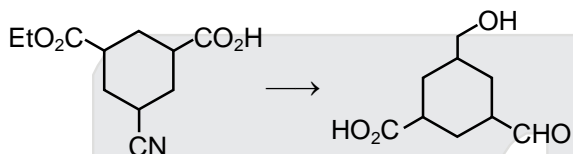
Page | 11 |

Toll Free : 1800 258 5555    08003 444 888    facebook.com/ResonanceEdu    twitter.com/ResonanceEdu    www.youtube.com/resowatch    blog.resonance.ac.in

26. Which of the following arrangements shows the schematic alignment of magnetic moments of antiferromagnetic substance ?

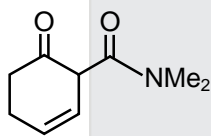
- (1)  $\uparrow \downarrow \downarrow \downarrow \downarrow \uparrow$       (2)  $\uparrow \uparrow \uparrow \uparrow \uparrow \uparrow$   
 (3)  $\uparrow \uparrow \downarrow \uparrow \uparrow \downarrow$       (4)  $\uparrow \downarrow \uparrow \downarrow \uparrow \downarrow$

27. The reagent(s) required for the following conversion are :



- (1) (i)  $\text{NaBH}_4$  (ii) Raney Ni/ $\text{H}_2$  (iii)  $\text{H}_3\text{O}^+$       (2) (i)  $\text{LiAlH}_4$  (ii)  $\text{H}_3\text{O}^+$   
 (3) (i)  $\text{B}_2\text{H}_6$  (ii) DIBAL-H (iii)  $\text{H}_3\text{O}^+$       (4) (i)  $\text{B}_2\text{H}_6$  (ii)  $\text{SnCl}_2/\text{HCl}$  (iii)  $\text{H}_3\text{O}^+$

28. The main reduction product of the following compound with  $\text{NaBH}_4$  in methanol is :



- (1)      (2)   
 (3)      (4)

29. Xenon hexafluoride on partial hydrolysis produces compounds 'X' and 'Y'. Compounds 'X' and 'Y' and the oxidation state of Xe are respectively :

- (1)  $\text{XeOF}_4$  (+6) and  $\text{XeO}_3$  (+6)      (2)  $\text{XeOF}_2$  (+4) and  $\text{XeO}_3$  (+6)  
 (3)  $\text{XeOF}_4$  (+6) and  $\text{XeO}_2\text{F}_2$  (+6)      (4)  $\text{XeO}_2\text{F}_2$  (+6) and  $\text{XeO}_2$  (+4)

30. A white sodium salt dissolves readily in water to give a solution which is neutral to litmus. When silver nitrate solution is added to the aforementioned solution, a white precipitate is obtained which does not dissolve in dilute nitric acid. The anion is :

- (1)  $\text{CO}_3^{2-}$       (2)  $\text{SO}_4^{2-}$       (3)  $\text{S}^{2-}$       (4)  $\text{Cl}^-$

## Resonance Eduventures Limited

Registered & Corporate Office: CG Tower, A-46 & 52, IPIA, Near City Mall, Jhalawar Road, Kota (Raj.)-324005  
 Tel.No.: 0744-6607777, 3012100, 3012222, 6635555 | Fax: +91-022-39167222 | CIN: U80302RJ2007PLC024029

To Know more: sms RESO at 56677 | contact@resonance.ac.in | www.resonance.ac.in

Page | 12 |

Toll Free : 1800 258 5555 08003 444 888 facebook.com/ResonanceEdu twitter.com/ResonanceEdu www.youtube.com/resowatch blog.resonance.ac.in

## MATHEMATICS

### Straight Objective Type

This section contains **30 multiple choice questions**. Each question has 4 choices (1), (2), (3) and (4) for its answer, out of which **Only One** is correct.






- An aeroplane flying at a constant speed, parallel to the horizontal ground,  $\sqrt{3}$  km above it, is observed at an elevation of  $60^\circ$  from a point on the ground. If, after five seconds, its elevation from the same point, is  $30^\circ$ , then the speed (in km/hr) of the aeroplane, is :  
 (1) 720 (2) 1500 (3) 750 (4) 1440
- A box 'A' contains 2 white, 3 red and 2 black balls. Another box 'B' contains 4 white, 2 red and 3 black balls. If two balls are drawn at random, without replacement, from a randomly selected box and one ball turns out to be white while the other ball turns out to be red, then the probability that both balls are drawn from box 'B' is :  
 (1)  $\frac{7}{8}$  (2)  $\frac{9}{16}$  (3)  $\frac{7}{16}$  (4)  $\frac{9}{32}$
- If a right circular cone, having maximum volume, is inscribed in a sphere of radius 3 cm, then the curved surface area (in  $\text{cm}^2$ ) of this cone is :  
 (1)  $8\sqrt{2}\pi$  (2)  $6\sqrt{2}\pi$  (3)  $8\sqrt{3}\pi$  (4)  $6\sqrt{3}\pi$
- If  $\beta$  is one of the angles between the normals to the ellipse  $x^2 + 3y^2 = 9$  at the points  $(3\cos\theta, \sqrt{3}\sin\theta)$  and  $(-3\sin\theta, \sqrt{3}\cos\theta)$ ;  $\theta \in \left(0, \frac{\pi}{2}\right)$ ; then  $\frac{2\cot\beta}{\sin 2\theta}$  is equal to :  
 (1)  $\frac{1}{\sqrt{3}}$  (2)  $\frac{\sqrt{3}}{4}$  (3)  $\frac{2}{\sqrt{3}}$  (4)  $\sqrt{2}$
- If  $\left(f \frac{x-4}{x+2}\right) = 2x + 1$ , ( $x \in \mathbb{R} - \{-1, -2\}$ ), then  $\int f(x)dx$  is equal to : (where C is a constant of integration)  
 (1)  $12 \log_e |1-x| - 3x + C$  (2)  $-12 \log_e |1-x| - 3x + C$   
 (3)  $12 \log_e |1-x| + 3x + C$  (4)  $-12 \log_e |1-x| + 3x + C$
- If  $\lambda \in \mathbb{R}$  is such that the sum of the cubes of the roots of the equation,  $x^2 + (2-\lambda)x + (10-\lambda) = 0$  is minimum, then the magnitude of the difference of the roots of this equation is :  
 (1)  $4\sqrt{2}$  (2) 20 (3)  $2\sqrt{5}$  (4)  $2\sqrt{7}$
- Two parabolas with a common vertex and with axes along x-axis and y-axis, respectively, intersect each other in the first quadrant. If the length of the latus rectum of each parabola is 3, then the equation of the common tangent to the two parabolas is :  
 (1)  $3(x+y) + 4 = 0$  (2)  $8(2x+y) + 3 = 0$  (3)  $x + 2y + 3 = 0$  (4)  $4(x+y) + 3 = 0$

## Resonance Eduventures Limited

Registered & Corporate Office: CG Tower, A-46 & 52, IPIA, Near City Mall, Jhalawar Road, Kota (Raj.)-324005  
 Tel.No.: 0744-6607777, 3012100, 3012222, 6635555 | Fax: +91-022-39167222 | CIN: U80302RJ2007PLC024029

To Know more: sms RESO at 56677 | contact@resonance.ac.in | www.resonance.ac.in

Page | 13 |

Toll Free : 1800 258 5555  08003 444 888  facebook.com/ResonanceEdu  twitter.com/ResonanceEdu  www.youtube.com/resowatch  blog.resonance.ac.in

8. If  $f(x) = \begin{vmatrix} \cos x & x & 1 \\ 2 \sin x & x^2 & 2x \\ \tan x & x & 1 \end{vmatrix}$ , then

$\lim_{x \rightarrow 0} \frac{f'(x)}{x}$

(1) does not exist

(3) exists and is equal to 0

(2) exists and is equal to -2

(4) exists and is equal to 2.

9. The value of the integral  $\int_{-\frac{\pi}{2}}^{\frac{\pi}{2}} \sin^4 x \left( 1 + \log \left( \frac{2 + \sin x}{2 - \sin x} \right) \right) dx$  is :

(1)  $\frac{3}{4}$

(2)  $\frac{3}{8} \pi$

(3) 0

(4)  $\frac{3}{16} \pi$

10. n-digit number are formed using only three digit 2,5 and 7. The smallest value of n for which 900 such distinct numbers can be formed, is :

(1) 9

(2) 7

(3) 8

(4) 6

11. If the tangents drawn to the hyperbola  $4y^2 = x^2 + 1$  intersect the co-ordinates axes at the distinct points A and B, then the locus of the mid point of AB is :

(1)  $4x^2 - y^2 + 16x^2y^2 = 0$

(2)  $x^2 - 4y^2 + 16x^2y^2 = 0$

(3)  $x^2 - 4y^2 - 16x^2y^2 = 0$

(4)  $4x^2 - y^2 - 16x^2y^2 = 0$

12. If tan A and tan B are the roots of the quadratic equation,  $3x^2 - 10x - 25 = 0$ , then the value of  $3 \sin^2 (A + B) - 10 \sin (A + B) \cdot \cos (A + B) - 25 \cos^2 (A + B)$  is :

(1) -25

(2) 10

(3) -10

(4) 25

13. Let  $y = y(x)$  be the solution of the differential equation  $\frac{dy}{dx} + 2y = f(x)$ , where  $f(x) = \begin{cases} 1 & , x \in [0,1] \\ 0 & , \text{otherwise} \end{cases}$

If  $y(0) = 0$ , then  $y\left(\frac{3}{2}\right)$  is :

(1)  $\frac{e^2 - 1}{e^3}$

(2)  $\frac{1}{2e}$

(3)  $\frac{e^2 + 1}{2e^4}$

(4)  $\frac{e^2 - 1}{2e^3}$

14. If b is the first term of an infinite G.P. whose sum is five, then b lies in the interval :

(1)  $[10, \infty)$

(2)  $(-\infty, -10]$

(3)  $(-10, 0)$

(4)  $(0, 10)$

15. Consider the following two binary relations on the set  $A = \{a, b, c\}$  :

$R_1 = \{(c,a), (b,b), (a,c), (c,c), (b,c), (a,a)\}$  and  $R_2 = \{(a,b), (b,a), (c,c), (c,a), (a,a), (b,b), (a,c)\}$ .

Then :

(1)  $R_2$  is symmetric but it is not transitive

(2) both  $R_1$  and  $R_2$  are not symmetric

(3) both  $R_1$  and  $R_2$  are transitive.

(4)  $R_1$  is not symmetric but it is transitive

## Resonance Eduventures Limited

Registered & Corporate Office: CG Tower, A-46 & 52, IPIA, Near City Mall, Jhalawar Road, Kota (Raj.)-324005

Tel.No.: 0744-6607777, 3012100, 3012222, 6635555 | Fax: +91-022-39167222 | CIN: U80302RJ2007PLC024029

To Know more: sms RESO at 56677 | contact@resonance.ac.in | www.resonance.ac.in

Page | 14 |

Toll Free : 1800 258 5555

08003 444 888

facebook.com/ResonanceEdu

twitter.com/ResonanceEdu

www.youtube.com/resowatch

blog.resonance.ac.in



16. A circle passes through the points (2,3) and (4,5). If its centre lies on the line,  $y - 4x + 3 = 0$ , then its radius is equal to :  
 (1)  $\sqrt{5}$  (2)  $\sqrt{2}$  (3) 1 (4) 2
17. In a triangle ABC, coordinates of A are (1,2) and the equations of the medians through B and C are respectively,  $x + y = 5$  and  $x = 4$ . Then area of  $\Delta ABC$  (in sq. units) is :  
 (1) 12 (2) 4 (3) 9 (4) 5
18. The set of all  $\alpha \in \mathbb{R}$ , for which  $w = \frac{1 + (1 - 8\alpha)z}{1 - z}$  is a purely imaginary number, for all  $z \in \mathbb{C}$  satisfying  $|z| = 1$  and  $\operatorname{Re} z \neq 1$ , is :  
 (1)  $\{0\}$  (2)  $\left\{0, \frac{1}{4}, -\frac{1}{4}\right\}$  (3) equal to  $\mathbb{R}$  (4) an empty set
19. If  $x_1, x_2, \dots, x_n$  and  $\frac{1}{h_1}, \frac{1}{h_2}, \dots, \frac{1}{h_n}$  are two A.P. such that  $x_3 = h_2 = 8$  and  $x_8 = h_7 = 20$ , then  $x_5 \cdot h_{10}$  equals :  
 (1) 3200 (2) 1600 (3) 2650 (4) 2560
20. If  $\vec{a}, \vec{b}$  and  $\vec{c}$  are unit vectors such that  $\vec{a} + 2\vec{b} + 2\vec{c} = 0$ , then  $|\vec{a} \times \vec{c}|$  is equal to :  
 (1)  $\frac{1}{4}$  (2)  $\frac{15}{16}$  (3)  $\frac{\sqrt{15}}{4}$  (4)  $\frac{\sqrt{15}}{16}$
21. A variable plane passes through a fixed point (3,2,1) and meets x, y and z axes at A, B and C respectively. A plane is drawn parallel to yz - plane through A, a second plane is drawn parallel zx-plane through B and a third plane is drawn parallel to xy-plane through C. Then the locus of the point of intersection of these three planes, is :  
 (1)  $\frac{3}{x} + \frac{2}{y} + \frac{1}{z} = 1$  (2)  $\frac{1}{x} + \frac{1}{y} + \frac{1}{z} = \frac{11}{6}$   
 (3)  $x + y + z = 6$  (4)  $\frac{x}{3} + \frac{y}{2} + \frac{z}{1} = 1$
22. Let A be a matrix such that  $A \cdot \begin{bmatrix} 1 & 2 \\ 0 & 3 \end{bmatrix}$  is a scalar matrix and  $|3A| = 108$ . Then  $A^2$  equals :  
 (1)  $\begin{bmatrix} 4 & 0 \\ -32 & 36 \end{bmatrix}$  (2)  $\begin{bmatrix} 36 & -32 \\ 0 & 4 \end{bmatrix}$  (3)  $\begin{bmatrix} 36 & 0 \\ -32 & -32 \end{bmatrix}$  (4)  $\begin{bmatrix} 4 & -32 \\ 0 & 36 \end{bmatrix}$
23. The area (in sq. units) of the region  $\{x \in \mathbb{R} : x \geq 0, y \geq 0, y \geq x - 2 \text{ and } y \leq \sqrt{x}\}$ , is :  
 (A)  $\frac{13}{3}$  (2)  $\frac{8}{3}$  (3)  $\frac{10}{3}$  (4)  $\frac{5}{3}$
24. If  $x^2 + y^2 + \sin y = 4$ , then the value of  $\frac{d^2y}{dx^2}$  at the point (-2, 0) is :  
 (1) -34 (2) 4 (3) -2 (4) -32

## Resonance Eduventures Limited

Registered & Corporate Office: CG Tower, A-46 & 52, IPIA, Near City Mall, Jhalawar Road, Kota (Raj.)-324005  
 Tel.No.: 0744-6607777, 3012100, 3012222, 6635555 | Fax: +91-022-39167222 | CIN: U80302RJ2007PLC024029

To Know more: sms RESO at 56677 | contact@resonance.ac.in | www.resonance.ac.in

Page | 15 |

Toll Free : 1800 258 5555  08003 444 888  facebook.com/ResonanceEdu  twitter.com/ResonanceEdu  www.youtube.com/resowatch  blog.resonance.ac.in






25. An angle between the plane,  $x + y + z = 5$  and the line of intersection of the planes,  $3x + 4y + z - 1 = 0$  and  $5x + 8y + 2z + 14 = 0$ , is :
- (1)  $\cos^{-1}\left(\sqrt{\frac{3}{17}}\right)$       (2)  $\cos^{-1}\left(\frac{3}{\sqrt{17}}\right)$       (3)  $\sin^{-1}\left(\frac{3}{\sqrt{17}}\right)$       (4)  $\sin^{-1}\left(\sqrt{\frac{3}{17}}\right)$
26. Let  $S = \{\lambda, \mu\} \in \mathbb{R} \times \mathbb{R} : f(t) = (|\lambda|e^{|\mu|} - \mu) \cdot \sin(2|t|), t \in \mathbb{R}$ , is a differentiable function}. Then S is a subset of :
- (1)  $(-\infty, 0) \times \mathbb{R}$       (2)  $\mathbb{R} \times [0, \infty)$       (3)  $[0, \infty) \times \mathbb{R}$       (4)  $\mathbb{R} \times (-\infty, 0)$
27. Let S be the set of all real values of k for which the system of linear equations
- $$\begin{aligned} x + y + z &= 2 \\ 2x + y - 2 &= 3 \\ 3x + 2y + kz &= 4 \end{aligned}$$
- Has a unique solution. Then S is :
- (1) equal to  $\mathbb{R} - \{0\}$       (2) an empty set  
(3) equal to  $\mathbb{R}$       (4) equal to  $\{0\}$
28. If n is the degree of the polynomial,  $\left[\frac{2}{\sqrt{5x^3+1}-\sqrt{5x^3-1}}\right]^8 + \left[\frac{2}{\sqrt{5x^3+1}+\sqrt{5x^3-1}}\right]^8$  and m is the coefficient of  $x^n$  in it, then the ordered pair (n,m) is equal to :
- (1)  $(8, 5(10)^4)$       (2)  $(12, 8(10)^4)$       (3)  $(12, (20)^4)$       (4)  $(24, (10)^8)$
29. The mean of a set of 30 observations is 75. If each observations is multiplied by a non-zero number  $\lambda$  and then each of them is decreased by 25, their mean remains the same. Then  $\lambda$  is equal to :
- (1)  $\frac{4}{3}$       (2)  $\frac{1}{3}$       (3)  $\frac{10}{3}$       (4)  $\frac{2}{3}$
30. If  $(p \wedge \sim q) \wedge (p \wedge r) \rightarrow \sim p \vee q$  is false, then the truth values of p, q and r are, respectively :
- (1) T,T,T      (2) F,T,F      (3) T,F,T      (4) F,F,F

## Resonance Eduventures Limited

Registered & Corporate Office: CG Tower, A-46 & 52, IPIA, Near City Mall, Jhalawar Road, Kota (Raj.)-324005  
Tel.No.: 0744-6607777, 3012100, 3012222, 6635555 | Fax: +91-022-39167222 | CIN: U80302RJ2007PLC024029

To Know more: sms RESO at 56677 | contact@resonance.ac.in | www.resonance.ac.in

Page | 16 |

Toll Free : 1800 258 5555  08003 444 888  facebook.com/ResonanceEdu  twitter.com/ResonanceEdu  www.youtube.com/resowatch  blog.resonance.ac.in

*Announces*

# VIVEK

**A COMPACT COURSE (CC) of 5 WEEKS\***

**Short-term Classroom Contact Program (SCCP)**

**Target: JEE (Advanced) 2018**

**Compact  
with Impact...**



## COURSE MODULES

Course Module	Target	Duration	Commencement Date/(Day)	End Date/(Day)
Module-II	JEE (Advanced) - 2018	05 Weeks*	16.04.2018 (Monday)	13.05.2018 (Sunday)

\*Approximate Duration