

(MAT) SOLUTION

1. **Ans. (3)**

Sol. +2 +3 +4
7 9 12 16
G I L P

Every option have this pattern except (3)

2. **Ans. (1,3)**

Sol. Copper, Brass, Bronze have copper in common.

3. **Ans. (1)**

Sol. Every number is a cube of an odd number except 512.

4. **Ans. (3)**

Sol. +1 +3 +5
I J M R
9 10 13 18

Every option have this pattern except option (3)

5. **Ans. (2)**

Sol. Every figure has T and (.) on opposite except option (2)

6. **Ans. (4)**

Sol. None shaded portion has no partition except option (4)

7. **Ans. (1)**

C	H	J	N	:	A	E	H	K	::	E	I	L	P	:	C	F	J	M
3	8	10	14		1	5	8	11		5	9	12	16		3	6	10	13
-2				-3				-2				-3						

Sol.

8. **Ans. (3)**

Sol. G C A E : 4 :: J E B H : 5
7 3 1 5 10 5 2 8
 $7 + 3 + 1 + 5 = 16 \Rightarrow 4^2$ $10 + 5 + 2 + 8 = 25 \Rightarrow 5^2$

9. **Ans. (4)**

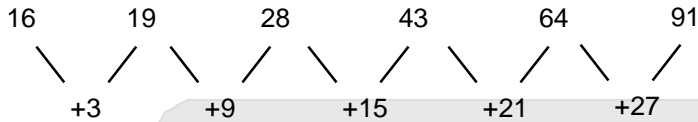
Sol. 4096 : 8 :: 1296 : 6
 $4096 = 8^4$ and $1296 = 6^4$

10. **Ans. (2)**

11. **Ans. (3)**

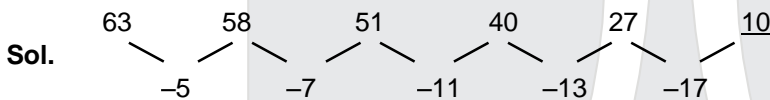
Sol. $\frac{6^3}{3} = 12,$ $\frac{9^3}{3} = 27$

12. **Ans. (1)**



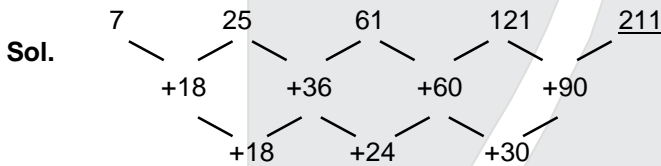
Sol.

13. **Ans. (3)**



Sol.

14. **Ans. (4)**



Sol.

15. **Ans. (2)**



Sol.

16. **Ans. (4)**

Sol. When 1 (.) goes from 2nd square, 2 (.) gets added up in the 1st square.

17. **Ans. (1)**

Sol. No. of figures inside the box follow a pattern, 5, 4, 3, 4, 5.

Sol. 18 to 21 18. (4) 19. (2) 20. (3) 21. (1)

J = 9; P = 0, C = 3; L = 5; E = 2; K = 4; N = 7; D = 8; V = 1.

22. Ans. (4) AEHM

E $\frac{-2}{-}$ C

J $\frac{-3}{-}$ G

N $\frac{-4}{-}$ J

P $\frac{-5}{-}$ K

23. Ans. (3)

Sol. [(Sum of last 2 letters) – (Sum of first 2 letters)] – 5

29. to 31

29. (3)

30. (2)

31. (4)

	Sanskrit	Science	Hindi	English	Mathematics
Dinesh	ॐ	ॐ	ॐ	⑨	⑨
Ganesh	⑨	⑨	ॐ	ॐ	ॐ
Umesh	⑨	ॐ	ॐ	ॐ	⑨
Nita	ॐ	ॐ	ॐ	⑨	⑨
Gita	ॐ	⑨	ॐ	ॐ	⑨

32. (2)

$\sqrt{64} \times 6 = 48$

$\sqrt{36} \times 5 = 30$

$\sqrt{25} \times 7 = 35$

33. (4)

LCM (4,2,3) = 12

LCM (5,3,4) = 60

LCM (6,4,5) = 60

34. (3)

HCF (12,6,9) = 3

HCF (25,15,20) = 5

HCF (30,12,18) = 6

35. (1)

$$(8 \times 4) - (6 \times 3) = 14$$

$$(9 \times 7) - (6 \times 8) = 15$$

$$(7 \times 6) - (5 \times 7) = 7$$

36. (2)

$$2^2 + 6^2 + 3^2 + 5^2 = 74$$

$$4^2 + 3^2 + 6^2 + 8^2 = 125$$

$$4^2 + 7^2 + 1^2 + 5^2 = 91$$

37-41.

37. (2)

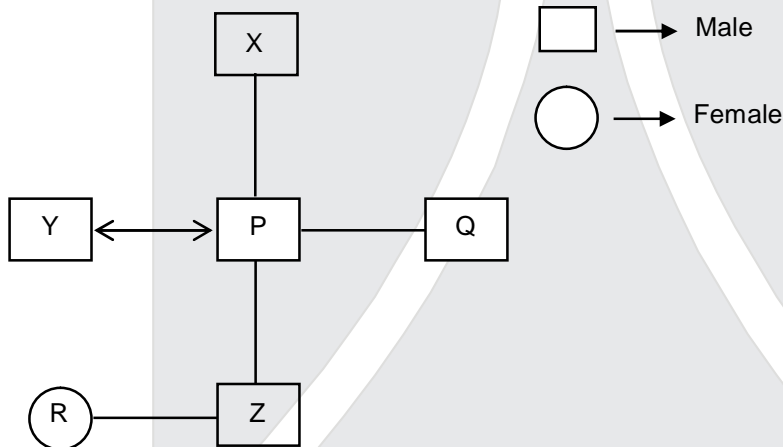
38. 4

39. (3)

40. 2

41. (1)

Sol.



42. to 49.

42. (2)

43. (3)

44. (1)

45. (4)

46. (3)

47. (1)

48. 2

49. (3)

50. Ans. (4)

Sol. First day = 2

$$\text{Second day} = 4 \rightarrow 2^2$$

$$\text{Third day} = 8 \rightarrow 2^3$$

$$\text{Therefore, 11}^{\text{th}} \text{ day} = 2^{11} \Rightarrow 2048.$$

Resonance Forward Admission & Scholarship Test (ResoFAST)

**Reso
FAST**

Be FAST to be the FIRST



EARLY START

MORE BENEFITS

BETTER RESULTS

ADMISSION ANNOUNCEMENT

Enroll Now for Academic Session 2017-18 @ Coaching Fee of 2016-17

Classroom Contact Programs for Class V to XII

Target: JEE (Main+Advanced) | JEE (Main) | AIIMS/ NEET | Pre-foundation

Academic Benefits*

More than **800** Academic Hours & **500** Classes

More than **15000** Academic Questions

More than **100** Testing Hours

Financial Benefits

Upto ₹ **30000+** Saving on 1 Year Course Fee

50% Concession on Admission Form Fee

Upto **90%** Scholarship on Course Fee

Test Dates

20th Nov 16 | 27th Nov 16

11th Dec 16 | 25th Dec 16 | 15th Jan 17

How to get Admission Packet

(a) **Online:** Visit www.resonance.ac.in, and buy ONLINE by paying through Credit/Debit Card & Net Banking, | (b) **In Person:** Through Cash/ DD made in favour of 'Resonance', payable at Kota submit at any of the Resonance Study Centres. | (c) **By Post/ Courier:** Make a DD/Pay Order of required amount in favour of 'Resonance', payable at Kota and send it to at Kota only. | (d) COD (sms RESO Your City Name to 56677).